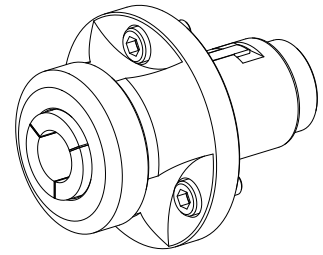


Change parts

Technical features

| | |
|-----------------------------|----------------|
| INDEX TRAUB products | TNL32 |
| Spindle clearance | 32 mm (1.26 ") |
| Machining side | Main spindle |
| Spindle mounting | Taper 1:4 |
| Clamping device size | 1536E/F37 |



No 3-side view is currently available for this product

11031077
912231

INDEX

Documents

No downloads available for this product