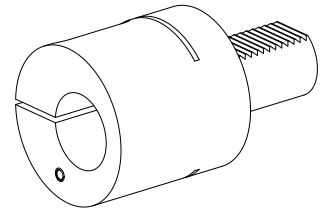


## Drilling tool holder VDI 40 D40

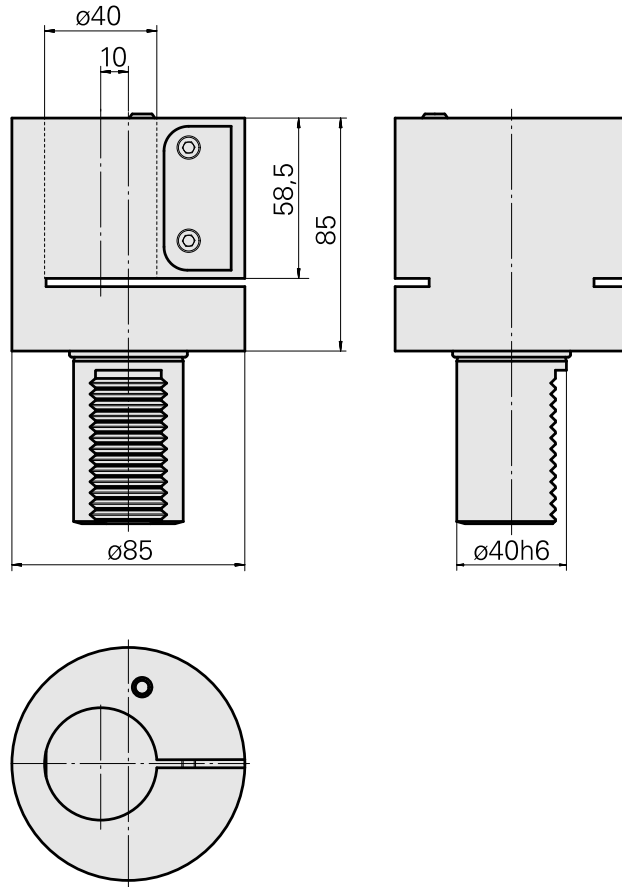
### Technical data

|                             |   |
|-----------------------------|---|
| <b>Shank VDI</b>            | VDI 40  |
| <b>Drive</b>                | not live  |
| <b>Fixation VDI</b>         | none  |
| <b>Cooling</b>              | external  |
| <b>Pressure</b>             | 20 bar  |
| <b>Mounting</b>             | D40   |
| <b>reversible 180°</b>      | no  |
| <b>X [mm]</b>               | 85 (3.35")  |
| <b>Y [mm]</b>               | –   |
| <b>Z [mm]</b>               | 10 (0.39)   |
| <b>INDEX TRAUB products</b> | V200 • V160C • V160G • V300 •<br>TNA400 • B400 • B500 • TNA500.2<br>• TNA400.2 • TNA400.3 • B400.3 •<br>B500.3 • TNA500.3 |



### Note

Eccentric mounting!



---

## Documents

No downloads available for this product

## Accessories

Optional accessories

### Other accessories

#### [Mounting sleeve D40 2x holes](#)

Product ID : 10159790

Previous product ID : W64220.02--

---

#### [Mounting sleeve D40 3x holes](#)

Product ID : 10789882

Previous product ID : W64221.14--

---

#### [SPRAY NOZZLE 14D/M6](#)

Product ID : 10358770

Previous product ID : 474550.0121

---