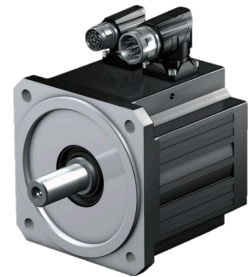


AC motor

Technical data

Electrical assemblies	Servomotor
Voltage type	AC~
(Nominal) speed (rpm)	3000 1/minute
(Stall) torque [Nm]	9.7 Newton/meter
Plug connection/type	Undefined connector
Protection class	IP66
Brake	yes - braked
Motor design	IM B5



No 3-side view is currently available for this product

10828881
481211.4021

INDEX

Documents

No downloads available for this product