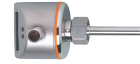


flow sensor

Technical data

Electrical assemblies	Flow sensor
Length (mm)	109 Millimeter
Width (mm)	42 Millimeter
Height (mm)	72 Millimeter
Current	0.09 Ampere
Voltage	24 Volt
Voltage type	DC (direct current)
Protection class	IP67



No 3-side view is currently available for this product

10663775
486510.0201

INDEX

Documents

No downloads available for this product