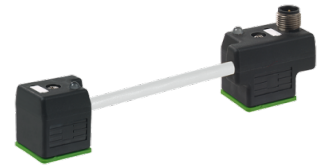


Cable

Technical features

Electrical assemblies	Electr. assembly lines
Length (mm)	150 Millimeter
Cross-section	0.75 Square millimeter
Number of wires/poles (ST)	3 Piece
Current	4 Ampere
Voltage	24 Volt
Voltage type	AC (alternating current) • DC (direct current)
Plug connection/type	M12 • Cube shape A
Outer diameter (mm)	5.9 Millimeter
	GY - grey
Protection class	IP67
Shield	no - unshielded
Insulating material	PUR



No 3-side view is currently available for this product

Documents

Product notes

[DE \(pdf\)](#)