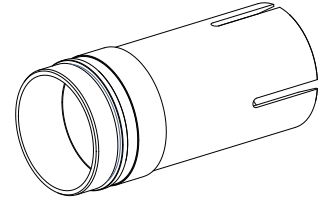


## External clamping sleeve,60 mm

### Technical features

<b>INDEX TRAUB products</b>	ABC • ABC.2
<b>Function (Component)</b>	External clamping sleeve
<b>Spindle clearance</b>	60 mm • 65 mm
<b>Bar loading magazine</b>	INDEX LMI
<b>Clamping stroke</b>	7 mm (0.28 ") • 20 mm (0.79 ")
<b>Machining side</b>	Main spindle
<b>Material diameter</b>	5 mm (0,20 ") • 6 mm (0.24 ") • 7 mm (0.28 ") • 8 mm (0.31 ") • 9 mm (0.35 ") • 10 mm (0.39 ") • 11 mm (0.43 ") • 12 mm (0.47 ") • 13 mm (0.51 ") • 14 mm (0.55 ") • 15 mm (0.59 ") • 16 mm (0.63 ") • 17 mm (0.67 ") • 18 mm (0.71 ") • 19 mm (0.75 ") • 20 mm (0.79 ") • 21 mm (0.83 ") • 22 mm (0.87 ") • 23 mm (0.91 ") • 24 mm (0.94 ") • 25 mm (0.98 ") • 26 mm (1.02 ") • 27 mm (1.06 ") • 28 mm (1.1 ") • 29 mm (1.14 ") • 30 mm (1.18 ") • 31 mm (1.22 ") • 32 mm (1.26 ") • 33 mm (1.30 ") • 34 mm (1.34 ") • 35 mm (1.38 ") • 36 mm (1.42 ") • 37 mm (1.46 ") • 38 mm (1.50 ") • 39 mm (1.54 ") • 40 mm (1.57 ") • 41 mm (1.61 ") • 42 mm (1.65 ") • 43 mm (1.69 ") • 44 mm (1.73 ") • 45 mm (1.77 ") • 46 mm (1.81 ") • 47 mm (1.85 ") • 48 mm (1.89 ") • 49 mm (1.93 ")



No 3-side view is currently available for this product

10984853  
905600.52

**INDEX**

---

## **Documents**

No downloads available for this product