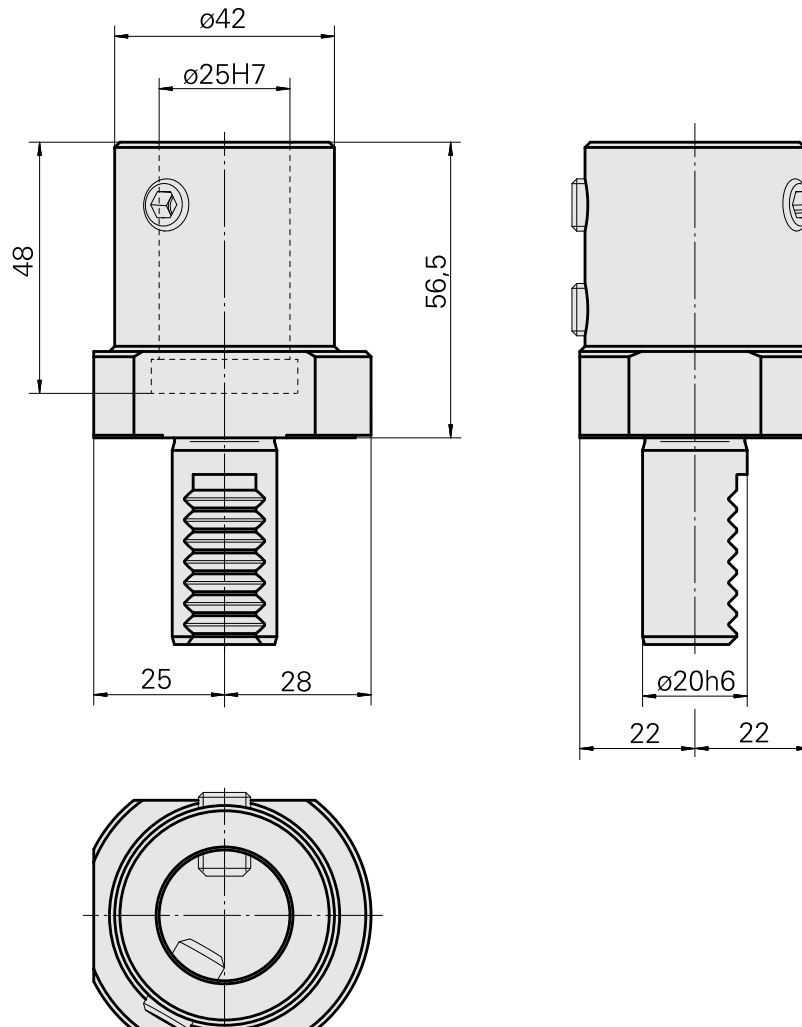
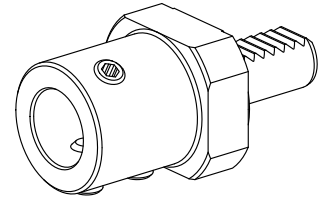


## Drilling tool holder VDI 20 DIN 1835 B/E, Form E1

### Technical data

|                 |                  |
|-----------------|------------------|
| Shank VDI       | VDI 20           |
| Drive           | not live         |
| Fixation VDI    | none             |
| Cooling         | internal         |
| Pressure        | 80 bar           |
| Mounting        | DIN 1835 B/E D25 |
| reversible 180° | no               |
| X [mm]          | 56.5 (2.22")     |
| Y [mm]          | -                |
| Z [mm]          | -                |



## **Documents**

No downloads available for this product

## **Accessories**

Optional accessories

### **Other accessories**

[Mounting sleeve with collar D25](#)

Product ID : 10070544

Previous product ID : W62221.41--

---