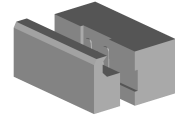

FESTO SMT0-1-PS-S-LED-24C

Technical data

Electrical assemblies	Proximity sensor
Length	44 Millimeter
Voltage	24 Volt
Voltage type	DC=
Plug connection/type	M8
Protection class	IP67
Switching function	(1) NO contact
Measuring range max. (mm)	4 Millimeter



No 3-side view is currently available for this product

10393016
478762.8151

INDEX

Documents

No downloads available for this product