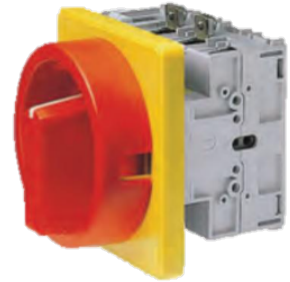


## Main switch

### Technical data

<b>Electrical assemblies</b>	Power/main switch
<b>Length</b>	166.5 Millimeter
<b>Width</b>	96 Millimeter
<b>Height</b>	132 Millimeter
<b>Cross-section</b>	70 Square millimeter
<b>Number of wires/poles (ST)</b>	4 Piece
<b>Current</b>	125 Ampere
<b>Voltage</b>	125 Volt
<b>Protection class</b>	IP65



No 3-side view is currently available for this product

## **Documents**

No downloads available for this product