

## Turning tool holder KPS 45 square 16x16

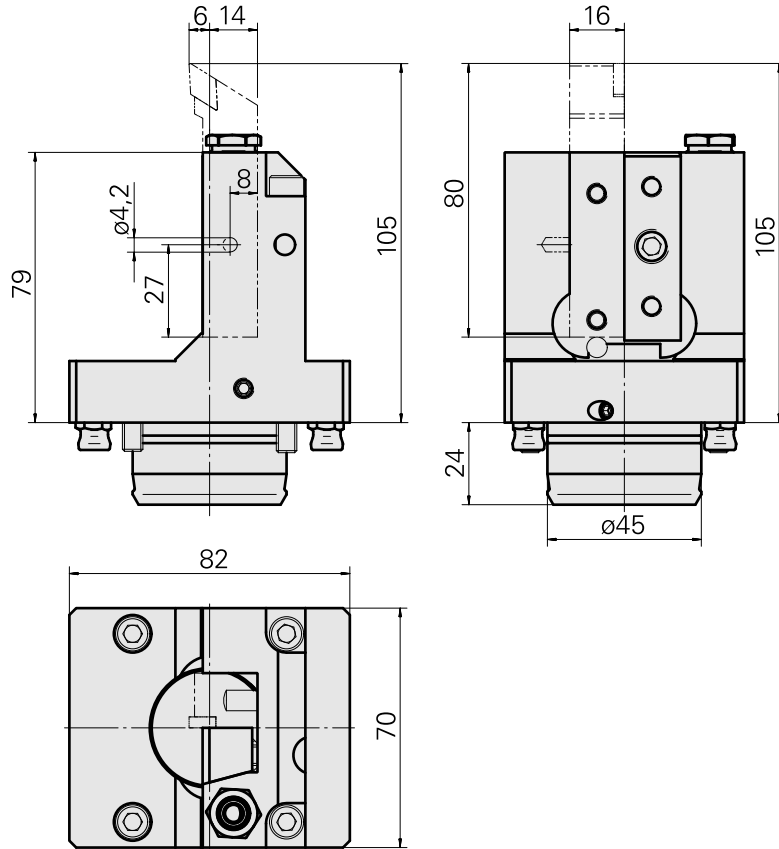
### Technical data

|                             |  |
|-----------------------------|--|
| <b>Shank KPS</b>            | KPS 45   |
| <b>Drive</b>                | not live   |
| <b>Cooling</b>              | external   |
| <b>Mounting</b>             | Square 16x16   |
| <b>Pressure</b>             | 80 bar, internal 160 bar opt.  |
| <b>X [mm]</b>               | 79 (3.11")   |
| <b>Y [mm]</b>               | -  |
| <b>Z [mm]</b>               | -14 (-0.55)  |
| <b>INDEX TRAUB products</b> | TNL18 • TNL20 • TNL32-11 •<br>TNL32 • TNL32-11 compact •<br>TNL20-11 • TNL32 compact •<br>TNK40.2-10 • TNL20.2 • TNK40.2 |



### Note

Internal cooling lubricant supply with 160 bar is possible only on stations with an additional fluid-transfer station!  
Internal cooling lubricant supply with 160 bar is possible only on stations with an additional fluid-transfer station!



---

## Documents

No downloads available for this product

## Accessories

### Optional accessories

#### Tool holder accessories

#### [Coolant tube, L=100 mm \(3.93"\)](#)

Product ID : 10346684

Previous product ID : W9990559

TH accessories  
category  
Cooling lubricant tube

Mounting  
M6

#### Other accessories

#### [Cover f. Drehhalter 16x16](#)

Product ID : 10141942

Previous product ID : W9991072

---

#### [Coolant Nozzle](#)

Product ID : 11031912

Previous product ID : W67500.3208

---

#### [Nozzle Kugel D10 - Bohrung D2 40°](#)

Product ID : 10072335

Previous product ID : 910693

---

#### [BUSHING 10 D x 6 D x 12,5](#)

Product ID : 10670360

Previous product ID : W67530.0824

---

10212775  
W7040055

**INDEX**

---

HOLLOW SCREW M14x1 M14x1

Product ID : 10105238  
Previous product ID : W67530.0818

---

Nozzle M6 mit D1,6

Product ID : 10147428  
Previous product ID : W00019.0216

---

Grub screw M14x1

Product ID : 10231477  
Previous product ID : P68451.90

---