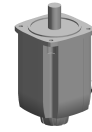


## AC-Motor 20,0Nm 2000 600V

### Technical data

<b>manufacturer product line</b>	Siemens
<b>Electrical assemblies</b>	Servomotor
<b>manufacturer product line</b>	1FT7
<b>Length</b>	242.5 Millimeter
<b>Width</b>	155 Millimeter
<b>Height</b>	196.5 Millimeter
<b>Number of wires/poles (ST)</b>	10 Piece
<b>Current</b>	9 Ampere
<b>Voltage</b>	600 Volt
<b>Voltage type</b>	AC~
<b>(Nominal) speed (rpm)</b>	2000 1/minute
<b>Rated power W</b>	3500 Watt
<b>(Stall) torque [Nm]</b>	20 Newton/meter
<b>Communication</b>	DirveCliq
<b>Plug connection/type</b>	M23 (size 1 / encoder)
<b>Protection class</b>	IP65
<b>Encoder type</b>	absolute - single-turn
<b>Brake</b>	no – unbraked
<b>Motor design</b>	IM B5



No 3-side view is currently available for this product

## **Documents**

No downloads available for this product