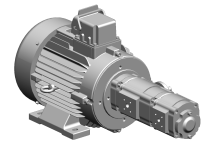


## Pump assembly

### Technical data

<b>Electrical assemblies</b>	Pump
<b>Length (mm)</b>	603.8 Millimeter
<b>Voltage</b>	400 Volt
<b>Frequency</b>	60 Hertz (1/second)
<b>Voltage type</b>	AC (alternating current)
<b>(Nominal) speed (rpm)</b>	1760 1/minute
<b>Rated power W</b>	4000 Watt
<b>Plug connection/type</b>	Heavy-duty connector
<b>Protection class</b>	IP55



No 3-side view is currently available for this product

---

**Documents**

No downloads available for this product