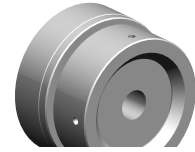


## Unscrewing device

### Technical data

#### INDEX TRAUB products

ABC • ABC65 • B400 • C100 • C200  
• G200.2 • G220 • TNK42/65 •  
TNX65/42 • TNA400.2 • ABC.2 •  
B400.3 • TNA400.3



#### Function (Component)

Unscrewing device

#### Spindle clearance

42mm

#### Bar loading magazine

INDEX MBL (2. Generation) 3200 •  
INDEX MBL (2. Generation) 4200

#### Material diameter

26mm (1.02") • 27mm (1.06") •  
28mm (1.1") • 29mm (1.14") •  
30mm (1.18") • 31mm (1.22") •  
32mm (1.26") • 33mm (1.30") •  
34mm (1.34") • 35mm (1.38") •  
36mm (1.42") • 37mm (1.46") •  
38mm (1.50") • 39mm (1.54") •  
40mm (1.57") • 41mm (1.61") •  
42mm (1.65") • 43mm (1.69") •  
44mm (1.73") • 45mm (1.77") •  
46mm (1.81") • 47mm (1.85") •  
48mm (1.89") • 49mm (1.93") •  
50mm (1.97") • 51mm (2.01") •  
52mm (2.05") • 53mm (2.09") •  
54mm (2.13") • 55mm (2.17") •  
56mm (2.20") • 57mm (2.24") •  
58mm (2.28") • 59mm (2.32") •  
60mm (2.36") • 61mm (2.40") •  
62mm (2.44") • 63mm (2.48") •  
64mm (2.52") • 65mm (2.56")

No 3-side view is currently available for this product

## **Documents**

No downloads available for this product