

## Bar guide, 10,00 mm

### Technical features

**INDEX TRAUB products**

TNL18-7 • TNL18-7B • TNL18-9 •  
TNL18-9P • TNL18P • TNL18

**Function (Component)**

Bar guide

**Spindle clearance**

21 mm (0.83")

**Bar loading magazine**

FMB minimag 20

**Machining side**

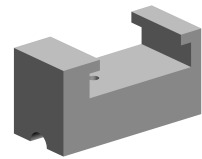
Main spindle

**Spindle drive**

Direct drive • Belt drive

**Material diameter**

8 mm (0.31 ") • 9 mm (0.35 ")



No 3-side view is currently available for this product

---

**Documents**

No downloads available for this product