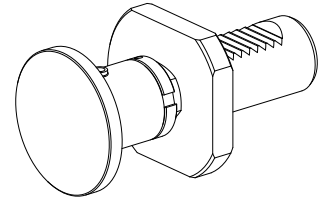


## Bar stop VDI 30, adjustable, live

### Technical data

<b>Shank VDI</b>	VDI 30
<b>Drive</b>	not live
<b>Fixation VDI</b>	none
<b>reversible 180°</b>	no
<b>Data carrier</b>	check tool station bore
<b>X [mm]</b>	60 - 97 (2.36" - 3.82")
<b>Y [mm]</b>	-
<b>Z [mm]</b>	-
<b>INDEX TRAUB products</b>	C42/65 • G160 • G300 • G400 • IT600 • TNX80 • ABC • C100 • C200 • G200 • G200.2 • G220 • G250 • R300 • TNX65/42 • TNA300 • B400 • B500 • TNA500.2 • TNA400.2 • ABC.2 • G220.3 • TNX220.3 • TNX200.3 • G200.3 • G320.3 compact • B400.3 • TNA400.3 • B500.3 • TNA500.3



## **Documents**

No downloads available for this product