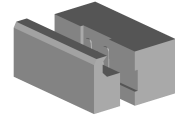


---

## **FESTO SMT0-1-PS-S-LED-24C**

### **Technical data**

<b>Electrical assemblies</b>	Proximity sensor
<b>Length</b>	44 Millimeter
<b>Voltage</b>	24 Volt
<b>Voltage type</b>	DC=
<b>Plug connection/type</b>	M8
<b>Protection class</b>	IP67
<b>Switching function</b>	(1) NO contact
<b>Measuring range max. (mm)</b>	4 Millimeter



No 3-side view is currently available for this product

10393016  
478762.8151

**INDEX**

---

## **Documents**

No downloads available for this product