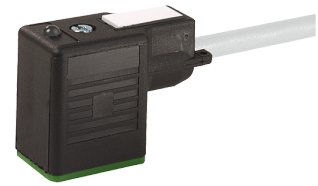


Cable

Technical data

Electrical assemblies	Electr. assembly lines
Length	10000 Millimeter
Cross-section	0.75 Square millimeter
Number of wires/poles (ST)	3 Piece
Current	4 Ampere
Voltage	24 Volt
Voltage type	AC~ • DC=
Plug connection/type	Cube shape BI
Outer diameter (mm)	5.9 Millimeter
	GY - grey
Protection class	IP67
Shield	no - unshielded
Insulating material	PUR



No 3-side view is currently available for this product

10117644
222909

INDEX

Documents

No downloads available for this product