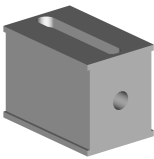


Bar guide 15mm

Technical data

| | |
|----------------------|-----------------------------|
| INDEX TRAUB products | TNL32 |
| Function (Component) | Bar guide |
| Spindle clearance | 32mm |
| Bar loading magazine | FMB LSK38 |
| Machining side | Main spindle |
| Spindle drive | Direct drive • Belt drive |
| Material diameter | 13mm (0.51") • 14mm (0.55") |



No 3-side view is currently available for this product

Documents

No downloads available for this product