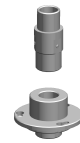


Bush

Technical data

| | |
|-----------------------------|---|
| INDEX TRAUB products | TNL20 • TNL20.2 |
| Function (Component) | |
| Spindle clearance | 24mm |
| Bar loading magazine | IEMCA Elite 220 |
| Machining side | Main spindle |
| Spindle drive | Direct drive |
| Material diameter | 11mm (0.43") • 12mm (0.47") • 13mm (0.51") • 14mm (0.55") • 15mm (0.59") • 16mm (0.63") • 17mm (0.67") • 18mm (0.71") • 19mm (0.75") • 20mm (0.79") |



No 3-side view is currently available for this product

10298120
802929

INDEX

Documents

No downloads available for this product