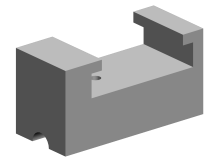


## Bar guide 10mm

### Technical data

|                             |                           |
|-----------------------------|---------------------------|
| <b>INDEX TRAUB products</b> | TNL18                     |
| <b>Function (Component)</b> | Bar guide                 |
| <b>Spindle clearance</b>    | 21mm                      |
| <b>Bar loading magazine</b> | FMB minimag 20            |
| <b>Machining side</b>       | Main spindle              |
| <b>Spindle drive</b>        | Direct drive • Belt drive |
| <b>Material diameter</b>    | 8mm (0.31") • 9mm (0.35") |



No 3-side view is currently available for this product

10552459  
781018

**INDEX**

---

## **Documents**

No downloads available for this product