

Product note

Grooving tool holder with grooving blade, Löcher System

External cooling lubricant supply

Double-sided grooving blade

Note on applicability

Illustrations in this publication may deviate from the product supplied. Errors and omissions due to technical progress expected.

A word on copyright

This document is protected by copyright and was originally compiled in German. The duplication and distribution of this document or parts thereof is prohibited without prior consent of the copyright owner, and any violators will be prosecuted. All rights, including the right to translate, are reserved.

© Copyright by INDEX-Werke GmbH & Co. KG

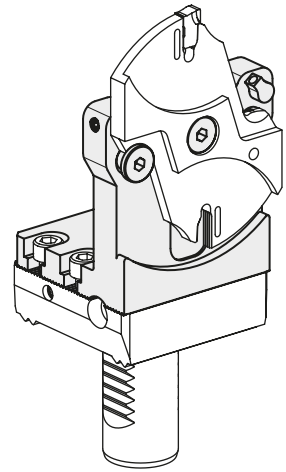
Mounting side on the outside of grooving tool holder block.....	4
Machining with left-hand grooving blade.....	4
Machining with right-hand grooving blade.....	5
Mounting side on the inside of grooving tool holder block	6
Machining with left-hand grooving blade.....	6
Machining with right-hand grooving blade.....	7

Mounting side on the outside of grooving tool holder block

Machining with left-hand grooving blade

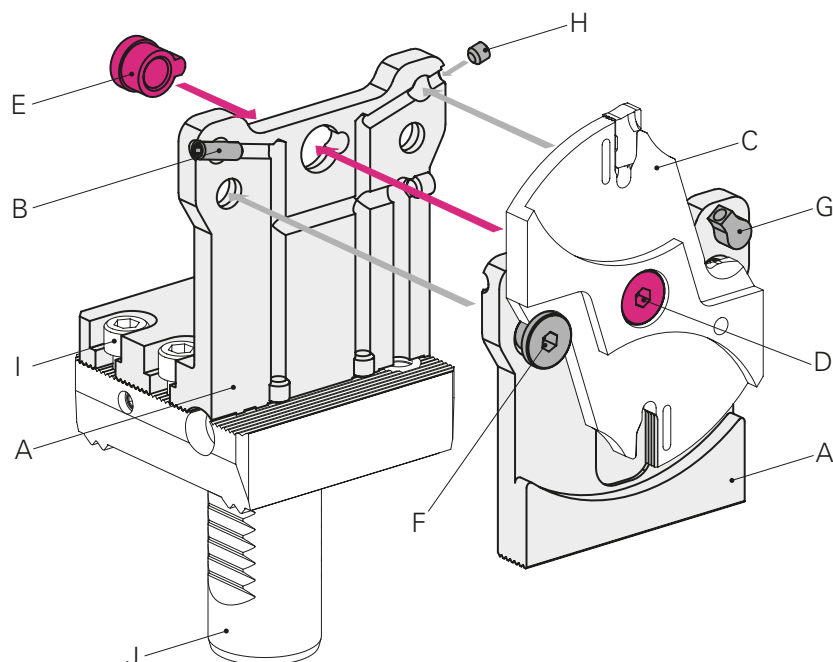
You will receive various items enclosed with your supplied grooving tool holder block (A). These must be installed as follows:

- Screw setscrew M4x12 (B) flush into grooving tool holder block (A)
- Complete left-hand grooving blade (C) (not included)
- Secure left-hand grooving blade (C) with clamping screw M8x1-LH (D) and sleeve (E) M8x1-LH to the grooving tool holder block (A)
- Secure left-hand grooving blade (C) with clamping screw M8x1-RH (F)
- Install nozzle (G) in grooving tool holder block (A) (it must be be closed with M4x5)
- Screw in set screw M4x4 (H) until nozzle (G) is clamped
- Secure the grooving tool holder block (A) on the base holder (J) with screws (I)



Left-hand grooving blade = left-hand thread on clamping screw (F) and sleeve (E)

Illustrations of grooving tool holder block (A) and base holder (J) may be similar. Structure and function can be assumed identical.

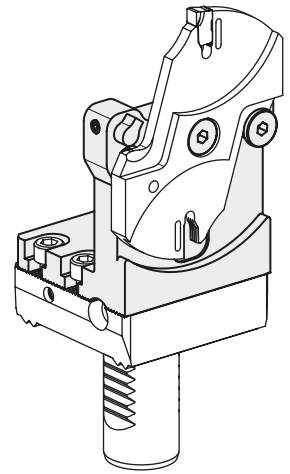


Mounting side on the outside of grooving tool holder block

Machining with right-hand grooving blade

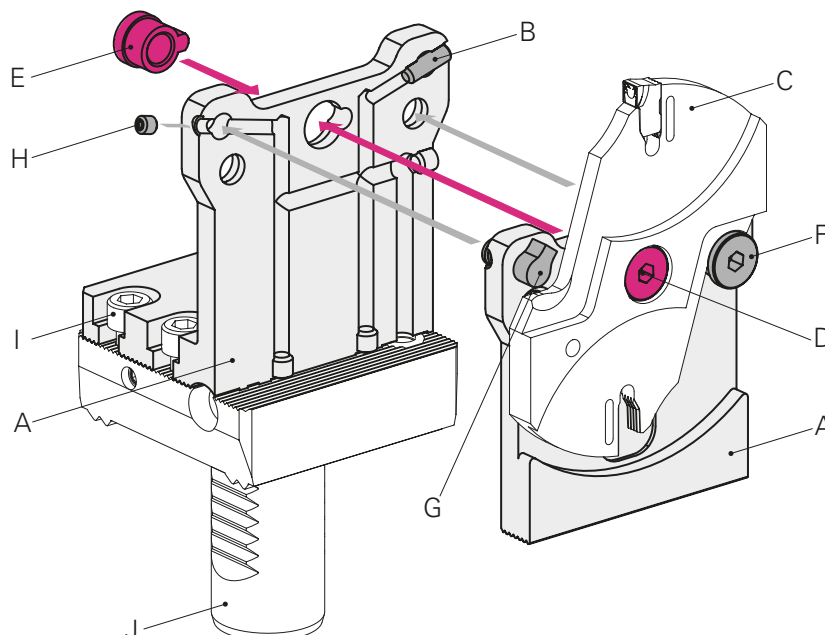
You will receive various items enclosed with your supplied grooving tool holder block (A). These must be installed as follows:

- Screw setscrew M4x12 (B) flush into grooving tool holder block (A)
- Complete right-hand grooving blade (C) (not included)
- Secure right-hand grooving blade (C) with clamping screw M8x1-RH (D) and sleeve (E) M8x1-RH to the grooving tool holder block (A)
- Secure right-hand grooving blade (C) with clamping screw M8x1-RH (F)
- Install nozzle (G) in grooving tool holder block (A) (it must be be closed with M4x5)
- Screw in set screw M4x4 (H) until nozzle (G) is clamped
- Secure the grooving tool holder block (A) on the base holder (J) with screws (I)



Right-hand grooving blade = right-hand thread on clamping screw (F) and sleeve (E)

Illustrations of grooving tool holder block (A) and base holder (J) may be similar. Structure and function can be assumed identical.



Product note

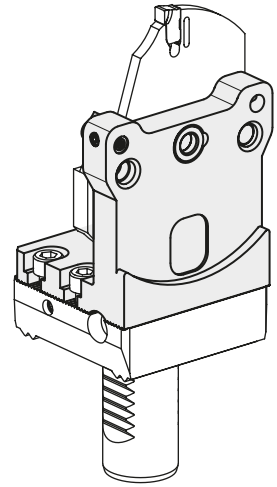
Grooving tool holder with grooving blade, Löcher System
W9800039EN-23.09.20

Mounting side on the inside of grooving tool holder block

Machining with left-hand grooving blade

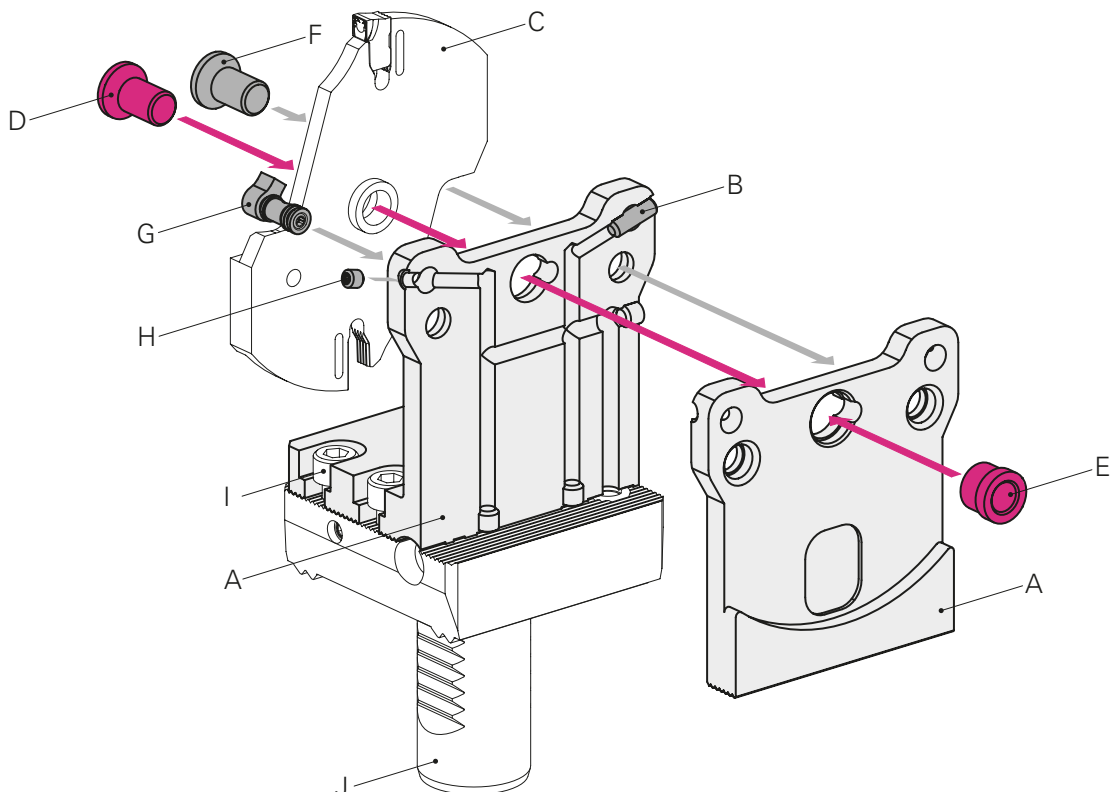
You will receive various items enclosed with your supplied grooving tool holder block (A). These must be installed as follows:

- Screw setscrew M4x12 (B) flush into grooving tool holder block (A)
- Complete left-hand grooving blade (C) (not included)
- Secure left-hand grooving blade (C) with clamping screw M8x1-LH (D) and sleeve (E) M8x1-LH to the grooving tool holder block (A)
- Secure left-hand grooving blade (C) with clamping screw M8x1-RH (F)
- Install nozzle (G) in grooving tool holder block (A) (it must be be closed with M4x5)
- Screw in set screw M4x4 (H) until nozzle (G) is clamped
- Secure the grooving tool holder block (A) on the base holder (J) with screws (I)



Left-hand grooving blade = left-hand thread on clamping screw (F) and sleeve (E)

Illustrations of grooving tool holder block (A) and base holder (J) may be similar. Structure and function can be assumed identical.

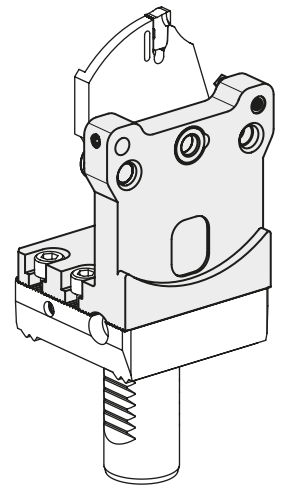


Mounting side on the inside of grooving tool holder block

Machining with right-hand grooving blade

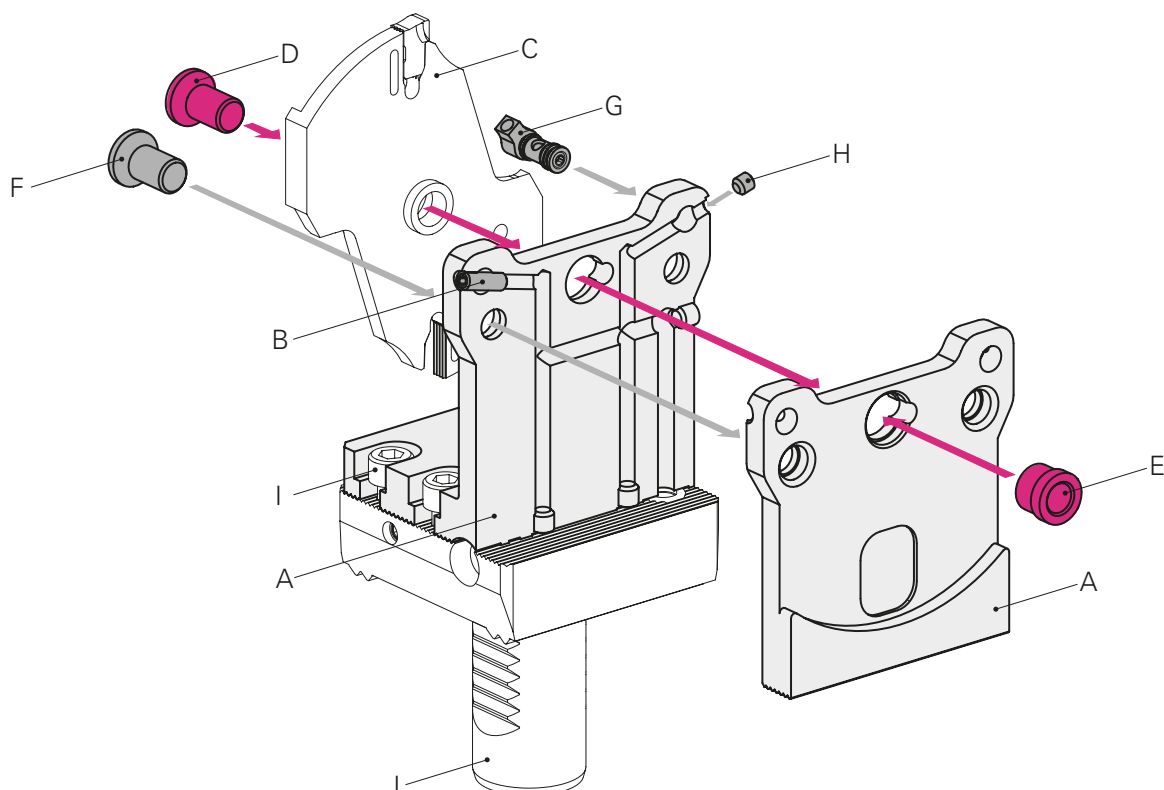
You will receive various items enclosed with your supplied grooving tool holder block (A). These must be installed as follows:

- Screw setscrew M4x12 (B) flush into grooving tool holder block (A)
- Complete right-hand grooving blade (C) (not included)
- Secure right-hand grooving blade (C) with clamping screw M8x1-RH (D) and sleeve (E) M8x1-RH to the grooving tool holder block (A)
- Secure right-hand grooving blade (C) with clamping screw M8x1-RH (F)
- Install nozzle (G) in grooving tool holder block (A) (it must be be closed with M4x5)
- Screw in set screw M4x4 (H) until nozzle (G) is clamped
- Secure the grooving tool holder block (A) on the base holder (J) with screws (I)



Right-hand grooving blade = right-hand thread on clamping screw (F) and sleeve (E)

Illustrations of grooving tool holder block (A) and base holder (J) may be similar. Structure and function can be assumed identical.



Product note

Grooving tool holder with grooving blade, Löcher System
W9800039EN-23.09.20



**INDEX-Werke GmbH & Co. KG
Hahn & Tessky**

Plochinger Straße 92
D-73730 Esslingen

Fon +49 711 3191-0
Fax +49 711 3191-587

info@index-werke.de
www.index-werke.de