



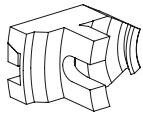
TRAUB TNL 12.2

Tool holder Basic equipment

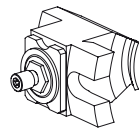
TRAUB TNL 12.2 - Basic equipment - Tool holders

We recommend the following basic equipment for tool holders and accessories.

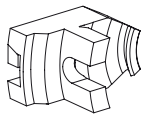
Round prism mounting



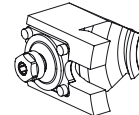
**1x Grooving tool holder
clockwise rotation**
Part no. 10652929
Mounting Square 12x12
X / Y / Z 55 / - / 0 mm



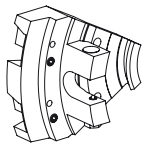
2x Drilling unit
Part no. 10623080
Mounting ER 8
Transmission ratio 1:2 (0,5)
X / Y / Z 39,1 / - / 4 mm



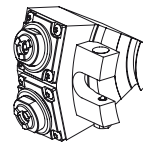
**2x Turning tool holder
clockwise rotation**
Part no. 10008946
Mounting Square 12x12
X / Y / Z 55 / - / 0 mm



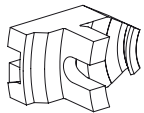
2x Milling unit
Part no. 10143694
Mounting ER 11
Transmission ratio 1:1 (1)
X / Y / Z 29,2 / - / 4 mm



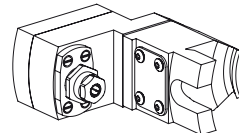
**1x Turning tool holder
double, clockwise rotation**
Part no. 12068751
Mounting Square 12x12
X / Y / Z 55 / ±12,5° / 0 mm



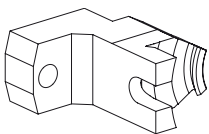
2x Milling unit, double
Part no. 12083251
Mounting ER 11
Transmission ratio 1:1 (1)
X / Y / Z 41,3 / ±12,5° / 4 mm



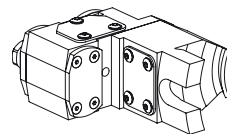
**1x Turning tool holder
reverse operation**
Part no. 10067800
Mounting Square 12x12
X / Y / Z 55 / - / 0 mm



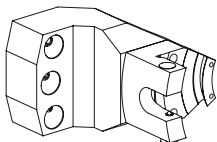
1x Milling unit
Part no. 10035044
Mounting ER 11
Transmission ratio 1:1 (1)
X / Y / Z 50 / - / 12,4 mm



3x Drilling tool holder
Part no. 10765312
Mounting D16
X / Y / Z 41 / - / -31 mm



1x Milling unit
Part no. 10993431
Mounting ER 11
Transmission ratio 1:1 (1)
X / Y / Z 41 / - / 92,2 mm

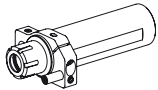


1x Drilling tool holder, triple
Part no. 12068451
Mounting D16
X / Y / Z 41 / ±12,5° / 41 mm

TRAUB TNL 12.2 - Basic equipment - Tool holders

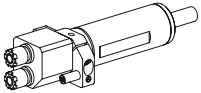
We recommend the following basic equipment for tool holders and accessories.

Shank 28



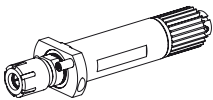
2x Drilling tool holder

Part no. 10266840
 Mounting ER 16
 Cooling internal p_{max} 120 bar
 X / Y / Z - / - / -34 mm



1x Drilling tool holder, double

Part no. 11028802
 Mounting ER 8
 Cooling internal p_{max} 120 bar
 X / Y / Z ± 8 / - / 54 mm



2x Drilling unit

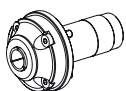
Part no. 12134060
 Mounting ER 16
 Cooling internal p_{max} 120 bar
 Transmission ratio 1:1 (1)
 X / Y / Z - / - / 45 mm

We will be happy to expand the listed basic equipment tailored to your production requirements.

Please keep in mind that machine-specific and material-specific components, such as clamping devices, spindle reductions and accessories are also needed for the bar loading magazine.

TRAUB TNL 12.2 - Basic Equipment - Machine Accessories

For best operation of your machine, INDEX offers tailor-made spindle reducers and clamping devices.



Main spindle

**Collet chuck for
 Compression collets F16**
 Clamping range up to 16mm
 Part no. 12065056

Spindle Reductions

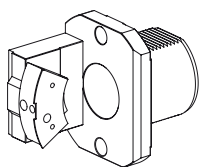
If required, please order separately.

We will be happy to send you an individual offer. Simply give us a call at +49 711 3191-9854 or send us an e-mail to werkzeughalter@index-werke.de

For more information see ixshop.ixworld.com

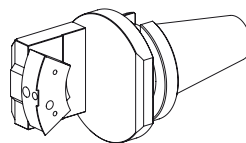
TRAUB TNL 12.2 - Basic Equipment - Machine Accessories

In addition, INDEX also provides presetting adapters, mounting aids for damage-free installation, and gauging your tool holders and other accessories.



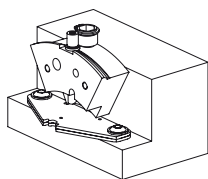
Presetting adapter VDI80

Round prism mounting
Part no. 12119894



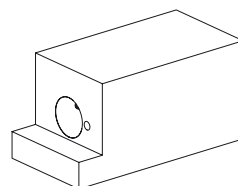
**Presetting adapter
quick-release taper 50**

Round prism mounting
Part no. 12060715



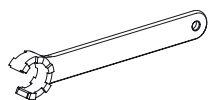
Pre-adjustment block

Round prism mounting
Part no. 10310261



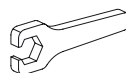
Pre-adjustment block

Tool mounting Shank 28
Part no. 11073560



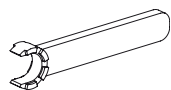
Chuck Key

Type E11AX
Part no. 10262607



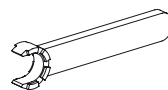
Chuck Key

Type E11P
Part no. 10969996



Chuck Key

Type E8M
Part no. 11077222



Chuck Key

Type E16M
Part no. 10621809

For more information see ixshop.ixworld.com

INDEX-Werke GmbH & Co. KG Hahn & Tessky

Plochinger Straße 92
D-73730 Esslingen

Fon +49 711 3191-0
Fax +49 711 3191-587

info@index-werke.de
www.index-werke.de