

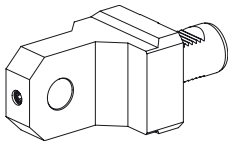


## INDEX G420

Tool holder      Basic equipment

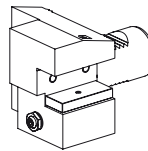
## INDEX G420, VDI40 - Basic Equipment-Tool Holders

We recommend the following basic equipment for tool holders and accessories.



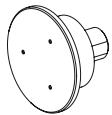
### 1x Bar stop, live

Part no. 10875475  
Fixation none  
Mounting D25  
Cooling –  
X / Y / Z 90 / – / 1 mm



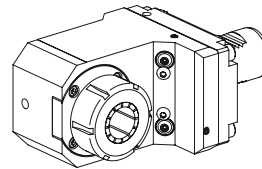
### 6x Turning tool holder, form C2/C3

Part no. 12098663  
Fixation W-serration  
Mounting Square 25x25  
Cooling external & internal,  $p_{\max}$  80 bar  
X / Y / Z 60,6 / – / 47,5 mm



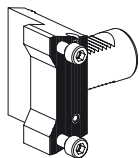
### 1x Bar stop, live

Part no. 10452051  
Fixation –  
Mounting D85  
Cooling –  
X / Y / Z – / – / 30 mm



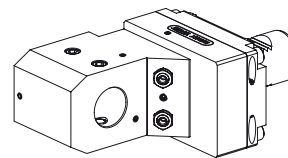
### 4x Drill holder

Part no. 10829165  
Fixation W-serration  
Mounting ER 40  
Cooling external,  $p_{\max}$  20 bar  
X / Y / Z 110 / – / 49 mm



### 1x Base holder, adjustable

Part no. 10846334  
Fixation W-serration  
Mounting –  
Cooling external  
X / Y / Z 17 / – / 34,8 mm



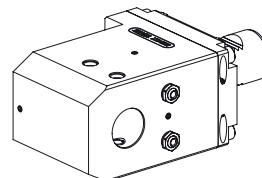
### 2x Drill holder

Part no. 12036278  
Fixation W-serration  
Mounting DIN 1835 B/E D32  
Cooling external & internal,  $p_{\max}$  80 bar  
X / Y / Z 110 / – / – mm



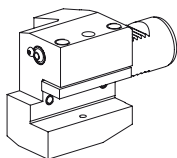
### 1x Grooving tool holder block

Part no. 10908238  
Fixation –  
Mounting Trapez 32x8  
Cooling external & internal,  $p_{\max}$  80 bar  
X / Y / Z 87,5 / – / 20 mm



### 4x Drill holder

Part no. 12026368  
Fixation W-serration  
Mounting DIN 1835 B/E D32  
Cooling external & internal,  $p_{\max}$  80 bar  
X / Y / Z 110 / – / 57,5 mm



### 10x Turning tool holder, form C1/C4

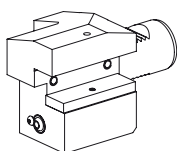
Part no. 10965815  
Fixation none  
Mounting Square 25x25  
Cooling external,  $p_{\max}$  20 bar  
X / Y / Z 85 / – / 42,5 mm

### 2x Reduction sleeve D32/06

Part no. 10735500

### 2x Reduction sleeve D32/10

Part no. 10264567



### 6x Turning tool holder, form C2/C3

Part no. 10810887  
Fixation none  
Mounting Square 25x25  
Cooling external,  $p_{\max}$  20 bar  
X / Y / Z 85 / – / 47,5 mm

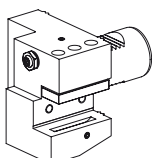


### 2x Reduction sleeve D32/12

Part no. 10865452

### 2x Reduction sleeve D32/16

Part no. 10246709



### 10x Turning tool holder, form C1/C4

Part no. 12077312  
Fixation W-serration  
Mounting Square 25x25  
Cooling external & internal,  $p_{\max}$  80 bar  
X / Y / Z 61,3 / – / 47,5 mm

### 2x Reduction sleeve D32/20

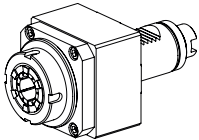
Part no. 10787586

### 2x Reduction sleeve D32/25

Part no. 10626419

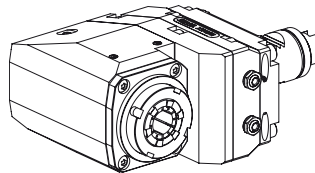
## INDEX G420, VDI40 - Basic Equipment-Tool Holders

We will be happy to send you an individual offer. Simply give us a call at +49 711 3191-9854 or send us an e-mail to [werkzeughalter@index-werke.de](mailto:werkzeughalter@index-werke.de)



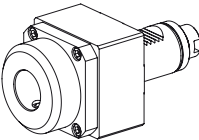
### 4x Milling unit

Part no. 12088208  
Fixation none  
Mounting ER 32  
Cooling external,  $p_{max}$  80 bar  
Transmission ratio 1:1 (1)  
X / Y / Z 82 / - / - mm



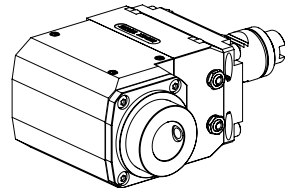
### 2x Milling unit

Part no. 12042168  
Fixation W-serration  
Mounting ER 32  
Cooling external,  $p_{max}$  80 bar  
Transmission ratio 1:1 (1)  
X / Y / Z 110 / - / 49,5 mm



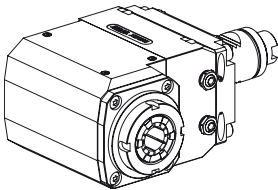
### 3x Milling unit

Part no. 12028521  
Fixation none  
Mounting D32  
Cooling external,  $p_{max}$  80 bar  
Transmission ratio 1:1 (1)  
X / Y / Z 85 / - / - mm



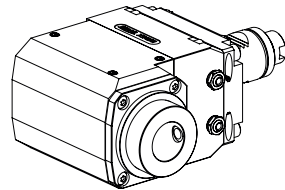
### 1x Milling unit

Part no. 12032576  
Fixation W-serration  
Mounting D32  
Cooling external, opt.internal,  $p_{max}$  80 bar  
Transmission ratio 1:1 (1)  
X / Y / Z 110 / - / 100 mm



### 4x Milling unit

Part no. 12033177  
Fixation W-serration  
Mounting ER 32  
Cooling external, opt.internal,  $p_{max}$  80 bar  
Transmission ratio 1:1 (1)  
X / Y / Z 110 / - / 93,5 mm



### 1x Milling unit

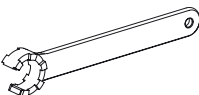
Part no. 12032524  
Fixation W-serration  
Mounting D32  
Cooling external, opt.internal,  $p_{max}$  80 bar  
Transmission ratio 2:1 (2)  
X / Y / Z 110 / - / 100 mm

We will be happy to expand the listed basic equipment tailored to your production requirements.

Please keep in mind that machine-specific and material-specific components, such as clamping devices, spindle reductions and accessories are also needed for the bar loading magazine.

## INDEX G420, VDI40 - Basic Equipment-Machine Accessories

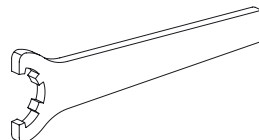
You will also get from INDEX other accessories.



### Chuck Key

#### Type ER32

Part no. 10174063



### Chuck Key

#### Type ER40

Part no. 10474438



### IC-attachment

#### Internal cooling 80 bar

Part no. 10687215



### IC-attachment

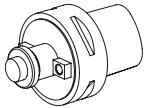
#### Internal cooling 160 bar

Part no. 10236572

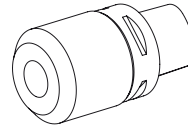
For more information see [ixshop.ixworld.com](http://ixshop.ixworld.com)

## INDEX G420, CAPTO C6 - Basic Equipment-Tool Holders

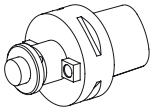
We recommend the following basic equipment for tool holders.



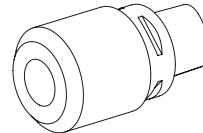
**1x Milling cutter holder**  
Part no. 12081860  
Mounting Milling shaft D22



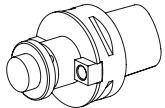
**3x Drill holder**  
Part no. 12081928  
Mounting D25



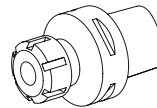
**1x Milling cutter holder**  
Part no. 12081921  
Mounting Milling shaft D27



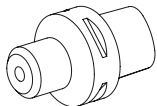
**3x Drill holder**  
Part no. 12081929  
Mounting D32



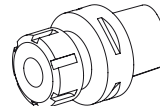
**1x Milling cutter holder**  
Part no. 12081922  
Mounting Milling shaft D32



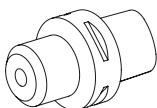
**6x Drill holder**  
Part no. 12081936  
Mounting ER25



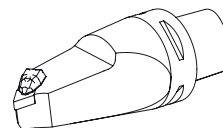
**2x Drill holder**  
Part no. 12081923  
Mounting D10



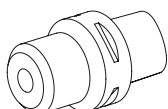
**6x Drill holder**  
Part no. 12081937  
Mounting ER32



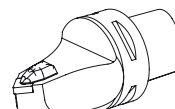
**3x Drill holder**  
Part no. 12081925  
Mounting D12



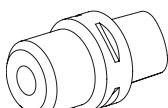
**1x Turning tool holder, left**  
Part no. 12081940  
Mounting for CN.. 1104..



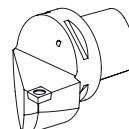
**3x Drill holder**  
Part no. 12081926  
Mounting D16



**1x Turning tool holder**  
Part no. 12081939  
Mounting for CN.. 1204..



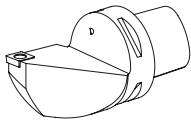
**3x Drill holder**  
Part no. 12081927  
Mounting D20



**1x Turning tool holder, right**  
Part no. 12081945  
Mounting for CN.. 1204..

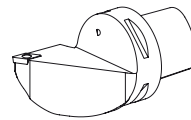
## INDEX G420, CAPTO C6 - Basic Equipment-Tool Holders

We will be happy to send you an individual offer. Simply give us a call at +49 711 3191-9854 or send us an e-mail to [werkzeughalter@index-werke.de](mailto:werkzeughalter@index-werke.de)



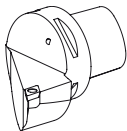
### 1x Turning tool holder, left

Part no. 12081946  
Mounting for CN.. 1204..



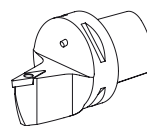
### 1x Turning tool holder, left

Part no. 12081943  
Mounting for DC.. 11T3..



### 1x Turning tool holder, right

Part no. 12081942  
Mounting for DC.. 11T3..



### 1x Turning tool holder

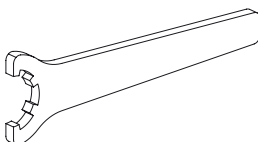
Part no. 12081941  
Mounting for VB.. 1604..

We will be happy to expand the listed basic equipment tailored to your production requirements.

Please keep in mind that machine-specific and material-specific components, such as clamping devices, spindle reductions and accessories are also needed for the bar loading magazine.

## INDEX G420, CAPTO C6 - Basic Equipment-Machine Accessories

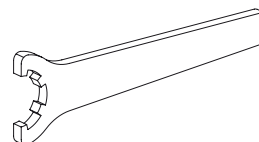
You will also get from INDEX other accessories.



### Chuck Key

#### Type ER25

Part no. 10802433



### Chuck Key

#### Type ER32

Part no. 10181051



### Coolant adapter kit

#### Type CAPTO C6

Part no. 10865732



### Socket wrench

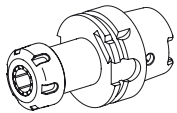
#### Type CAPTO C6

Part no. 10352082

For more information see [ixshop.ixworld.com](http://ixshop.ixworld.com)

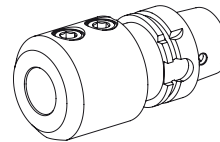
## INDEX G420, HSK63 - Basic Equipment-Tool Holders

We recommend the following basic equipment for tool holders and accessories.



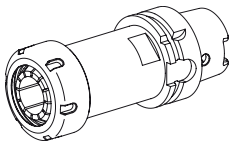
### 5x Drill holder

Part no. 10613579  
Form A  
Mounting ER25  
Cooling internal,  $p_{max}$  80 bar  
X / Z 80 / – mm



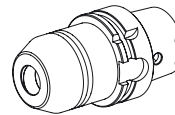
### 2x Drill holder

Part no. 10123145  
Form A  
Mounting D32  
Cooling internal,  $p_{max}$  80 bar  
X / Z 110 / – mm



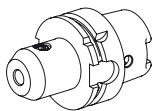
### 5x Drill holder

Part no. 10155467  
Form A  
Mounting ER 40  
Cooling internal,  $p_{max}$  80 bar  
X / Z 120 / – mm



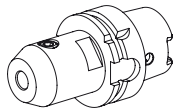
### 2x Drill holder

Part no. 10869184  
Form A  
Mounting Hydraulic expansion chuck D20  
Cooling internal,  $p_{max}$  80 bar  
X / Z 80 / – mm



### 5x Drill holder

Part no. 10971880  
Form A  
Mounting D10  
Cooling internal,  $p_{max}$  40 bar  
X / Z 65 / – mm



### 5x Drill holder

Part no. 10221444  
Form A  
Mounting D12  
Cooling internal,  $p_{max}$  80 bar  
X / Z 80 / – mm



### 2x Reduction sleeve D20/06

Part no. 10052498

### 2x Reduction sleeve D20/08

Part no. 10880268

### 2x Reduction sleeve D20/10

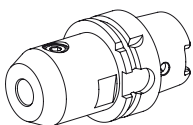
Part no. 10422510

### 2x Reduction sleeve D20/12

Part no. 10508491

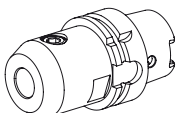
### 2x Reduction sleeve D20/16

Part no. 10445247



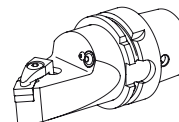
### 5x Drill holder

Part no. 10415848  
Form A  
Mounting D16  
Cooling internal,  $p_{max}$  80 bar  
X / Z 80 / – mm



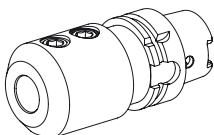
### 5x Drill holder

Part no. 10336873  
Form A  
Mounting D20  
Cooling internal,  $p_{max}$  80 bar  
X / Z 80 / – mm



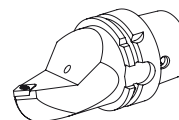
### 2x Turning tool holder

Part no. 10809872  
Form T  
Mounting for CN.. 1204..  
Cooling external,  $p_{max}$  80 bar  
X / Z 100 / – mm



### 5x Drill holder

Part no. 10695393  
Form A  
Mounting D25  
Cooling internal,  $p_{max}$  80 bar  
X / Z 110 / – mm

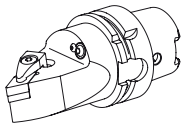


### 2x Turning tool holder

Part no. 11016276  
Form T  
Mounting for DC.. 11T3..  
Cooling external,  $p_{max}$  80 bar  
X / Z 100 / – mm

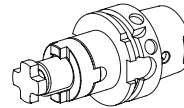
## INDEX G420, HSK63 - Basic Equipment-Tool Holders

We will be happy to send you an individual offer. Simply give us a call at +49 711 3191-9854 or send us an e-mail to [werkzeughalter@index-werke.de](mailto:werkzeughalter@index-werke.de)



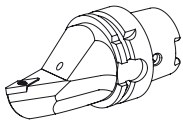
### 2x Turning tool holder

Part no. 10652895  
Form T  
Mounting for DN.. 1506..  
Cooling external,  $p_{max}$  80 bar  
X / Z 100 / – mm



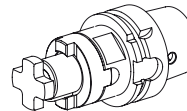
### 2x Milling cutter holder

Part no. 10662987  
Form A  
Mounting Milling shaft D22  
Cooling –  
X / Z 48 / – mm



### 1x Turning tool holder

Part no. 10468828  
Form T  
Mounting for VC.. 1604..  
Cooling external,  $p_{max}$  80 bar  
X / Z 100 / – mm



### 2x Milling cutter holder

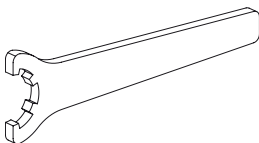
Part no. 10834685  
Form A  
Mounting Milling shaft D27  
Cooling –  
X / Z 48 / – mm

We will be happy to expand the listed basic equipment tailored to your production requirements.

Please keep in mind that machine-specific and material-specific components, such as clamping devices, spindle reductions and accessories are also needed for the bar loading magazine.

## INDEX G420, HSK63 - Basic Equipment-Machine Accessories

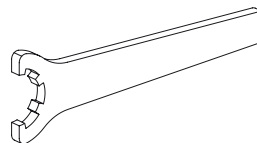
You will also get from INDEX other accessories.



### Chuck Key

#### Type ER25

Part no. 10802433



### Chuck Key

#### Type ER40

Part no. 10474438



### Coolant adapter kit

#### Type HSK63 max. 80 bar

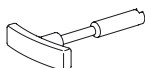
Part no. 11074450



### Coolant adapter kit

#### Type HSK63 max. 120 bar

Part no. 12024087



### Socket wrench

#### Type HSK63

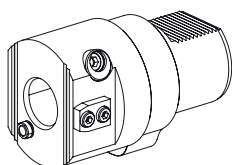
Part no. 10352082

For more information see [ixshop.ixworld.com](http://ixshop.ixworld.com)

## INDEX G420 - Basic Equipment-Machine Accessories

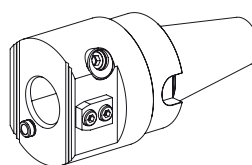
You will also get from INDEX presetting adapters and mounting aids for damage-free installation and measuring your tool holders.

### VDI



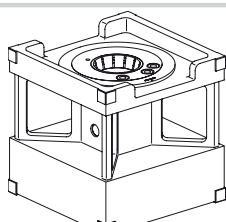
**Presetting adapter  
VDI80**

**Tool mounting VDI40**  
Part no. 10531917



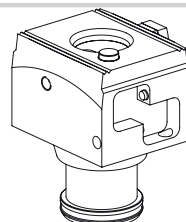
**Presetting adapter  
quick-release taper 50**

**Tool mounting VDI40**  
Part no. 10921942



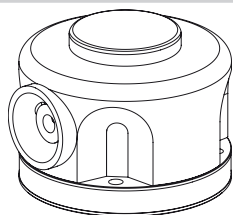
**Pre-adjustment block**

**Basic body**  
Part no. 10444808



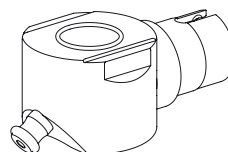
**Pre-adjustment block**

**Adapter tool mounting VDI40**  
Part no. 10946082



**Mounting aid TOOLFIX**

**Basic body**  
Part no. 10917422



**Mounting aid TOOLFIX**

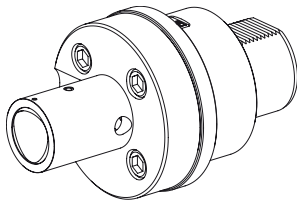
**Adapter tool mounting VDI40**  
Part no. 10416978



## INDEX G420 - Basic Equipment-Machine Accessories

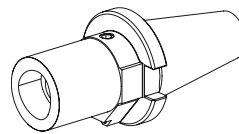
You will also get from INDEX presetting adapters and mounting aids for damage-free installation and measuring your tool holders.

### CAPTO C6



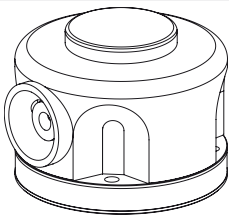
**Presetting adapter  
VDI80**

**Tool mounting CAPTO C6**  
Part no. 12102653



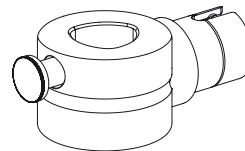
**Presetting adapter  
quick-release taper 50**

**Tool mounting CAPTO C6**  
Part no. 12095573



**Mounting aid TOOLFIX**

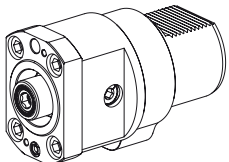
**Basic body**  
Part no. 10917422



**Mounting aid TOOLFIX**

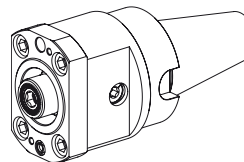
**Adapter tool mounting CAPTO C6**  
Part no. 12095515

### HSK63



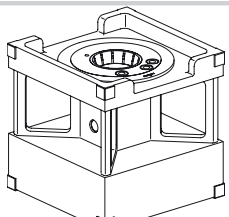
**Presetting adapter  
VDI80**

**Tool mounting HSK63**  
Part no. 10094249



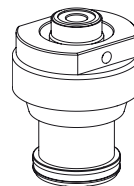
**Presetting adapter  
quick-release taper 50**

**Tool mounting HSK63**  
Part no. 10614276



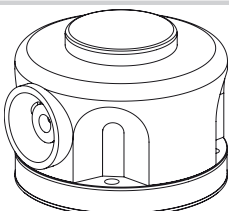
**Pre-adjustment block**

**Basic body**  
Part no. 10444808



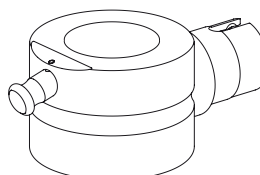
**Pre-adjustment block**

**Adapter tool mounting HSK63**  
Part no. 10643359



**Mounting aid TOOLFIX**

**Basic body**  
Part no. 10917422



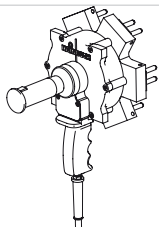
**Mounting aid TOOLFIX**

**Adapter tool mounting HSK63**  
Part no. 10573278

## INDEX G420 - Basic Equipment-Machine Accessories

For best operation of your machine, INDEX offers tailor-made spindle reducers and clamping devices.

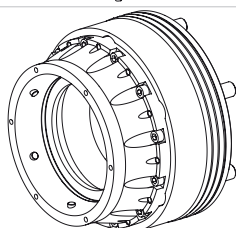
### Spindle diameter 120mm



**Hainbuch, Changing Fixture pneumatic  
Spanntop nova chuck**

Part no. 12066309

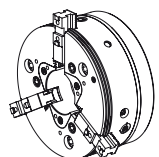
Clamping device size 125  
External clamping



**Hainbuch  
Spanntop nova chuck, Modular**

Part no. 12080565

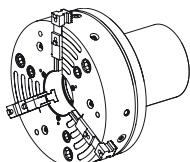
Spindle clearance 104/120mm  
Spindle mounting KK11  
Clamping device size 125



**Schunk  
Rota THW Plus 315 - 104 - A11**

Part no. 12080519

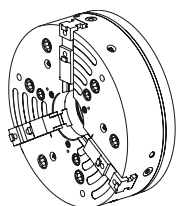
Spindle clearance 102/120mm  
Spindle mounting KK11  
Clamping device size 315



**Schunk  
Rota THW Plus 400 - 120 - A11**

Part no. 12029596

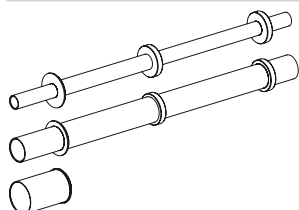
Spindle clearance 104/120mm  
Spindle mounting KK11  
Clamping device size 400



**Schunk  
Rota THW Plus 500 - 128 - A11 GBK**

Part no. 12080564

Spindle clearance 120/128mm  
Spindle mounting KK11  
Clamping device size 500



**Spindle clearance 120mm  
Clamping stroke 48mm  
Material diameter D40 - D120**

Please note the part no. from the  
Spindle Reductions section under [ixshop.ixworld.com](http://ixshop.ixworld.com)

# INDEX

# INDEX

## **INDEX-Werke GmbH & Co. KG Hahn & Tessky**

Plochinger Straße 92  
D-73730 Esslingen

Fon +49 711 3191-0  
Fax +49 711 3191-587

[info@index-werke.de](mailto:info@index-werke.de)  
[www.index-werke.de](http://www.index-werke.de)