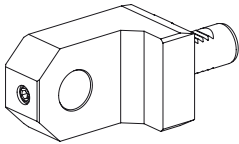


INDEX G200.2

Tool holder Basic equipment

INDEX G200.2, VDI25 - Basic Equipment - Tool Holders

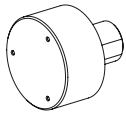
We recommend the following basic equipment for tool holders and accessories.



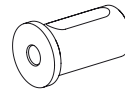
1x Bar stop, live
 Part no. 10505133
 Fixation none
 Mounting D25
 Cooling -
 X / Y / Z 70 / - / 30 mm

4x Reduction sleeve D32/06
 Part no. 10735500

4x Reduction sleeve D32/10
 Part no. 10264567

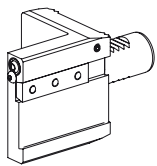


1x Bar stop, live
 Part no. 10900227
 Fixation none
 Aufnahme D58
 Cooling -
 X / Y / Z - / - / 30 mm



4x Reduction sleeve D32/12
 Part no. 10865452

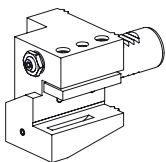
4x Reduction sleeve D32/16
 Part no. 10246709



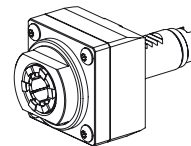
1x Grooving tool holder
 Part no. 10222400
 Fixation W-serration
 Mounting Square 32x4
 Cooling external, p_{max} 20 bar
 X / Y / Z 68.2 / - / 30 mm

4x Reduction sleeve D32/20
 Part no. 10787586

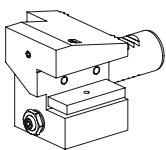
4x Reduction sleeve D32/25
 Part no. 10626419



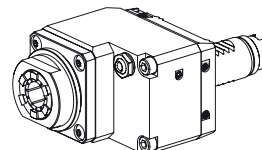
8x Turning tool holder, form C1/C4
 Part no. 12088124
 Fixation W-serration
 Mounting Square 20x20
 Cooling external & internal, p_{max} 80 bar
 X / Y / Z 56 / - / 15 mm



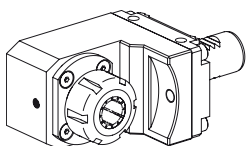
3x Drilling unit
 Part no. 10828154
 Fixation none
 Mounting ER 25
 Cooling external, p_{max} 80 bar
 Transmission ratio 1:1 (1)
 X / Y / Z 57 / - / - mm



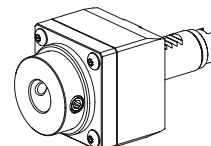
3x Turning tool holder, form C2/C3
 Part no. 12084149
 Fixation W-serration
 Mounting Square 20x20
 Cooling external & internal, p_{max} 80 bar
 X / Y / Z 56 / - / 19 mm



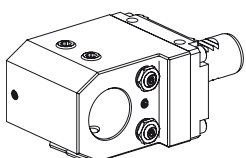
1x Milling unit
 Part no. 10991401
 Fixation W-serration
 Mounting ER 25
 Cooling external, p_{max} 80 bar
 Transmission ratio 1:1 (1)
 X / Y / Z 89,9 / - / 31 mm



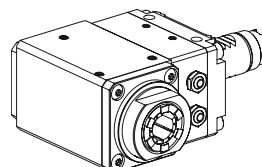
4x Drill holder
 Part no. 10545041
 Fixation W-serration
 Mounting ER 25
 Cooling external & internal, p_{max} 80 bar
 X / Y / Z 70 / - / 31 mm



1x Milling unit
 Part no. 10307933
 Fixation none
 Mounting DIN 1835 B/E D20
 Cooling external, p_{max} 80 bar
 Transmission ratio 1:1 (1)
 X / Y / Z 72 / - / - mm

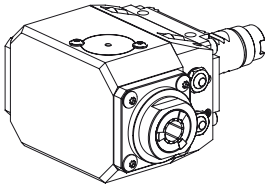


3x Drill holder
 Part no. 10712278
 Fixation W-serration
 Mounting DIN 1835 B/E D32
 Cooling external & internal, p_{max} 80 bar
 X / Y / Z 70 / - / 30 mm



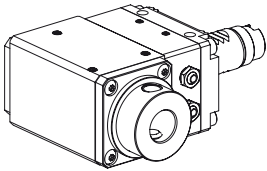
3x Milling unit
 Part no. 10392320
 Fixation W-serration
 Mounting ER 25
 Cooling external, opt. internal, p_{max} 80 bar
 Transmission ratio 1:1 (1)
 X / Y / Z 70 / - / 64 mm

INDEX G200.2, VDI25 - Basic Equipment - Tool Holders



1x Drilling unit

Part no. 11064426
Fixation W-serration
Mounting ER 20
Cooling external, opt.internal, p_{\max} 80 bar
Transmission ratio 1:2 (0.5)
X / Y / Z 70 / - / 80 mm



1x Milling unit

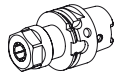
Part no. 10444044
Fixation W-serration
Mounting DIN 1835 B/E D20
Cooling external, opt.internal, p_{\max} 80 bar
Transmission ratio 2:1 (2)
X / Y / Z 70 / - / 71 mm

We will be happy to expand the listed basic equipment tailored to your production requirements.

Please keep in mind that machine-specific and material-specific components, such as clamping devices, spindle reductions and accessories are also needed for the bar loading magazine.

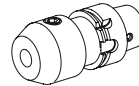
INDEX G200.2, HSK40 - Basic Equipment - Tool Holders

We recommend the following basic equipment for tool holders and accessories.



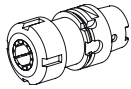
5x Drilling tool holder

Part no. 10856434
 Form A
 Mounting ER16
 Cooling internal, p_{max} 80 bar
 X / Z 50 / – mm



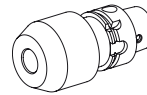
5x Drilling tool holder

Part no. 10248706
 Form A
 Mounting D12
 Cooling internal, p_{max} 80 bar
 X / Z 60 / – mm



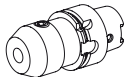
5x Drilling tool holder

Part no. 11014232
 Form A
 Mounting ER 25
 Cooling internal, p_{max} 80 bar
 X / Z 60 / – mm



5x Drilling tool holder

Part no. 10185680
 Form A
 Mounting D16
 Cooling internal, p_{max} 80 bar
 X / Z 75 / – mm



5x Drilling tool holder

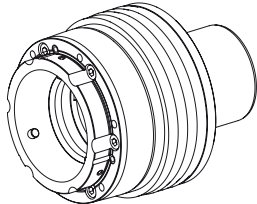
Part no. 10868864
 Form A
 Mounting D10
 Cooling internal, p_{max} 80 bar
 X / Z 60 / – mm

We will be happy to expand the listed basic equipment tailored to your production requirements.

Please keep in mind that machine-specific and material-specific components, such as clamping devices, spindle reductions and accessories are also needed for the bar loading magazine.

INDEX G200.2 - Basic Equipment - Machine Accessories

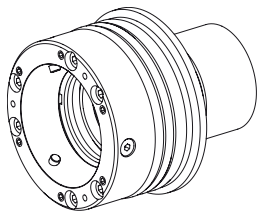
For best operation of your machine, INDEX offers tailor-made spindle reducers and clamping devices.



Main spindle D65

**HAINBUCH Spanntop nova
Combi pull-back - Spanntop**

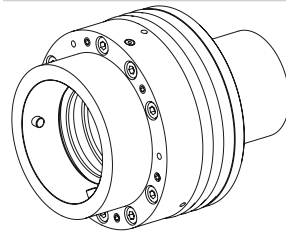
Part no. 10329721



Main spindle D65

**HAINBUCH Spanntop nova
modular - through-bore chuck**

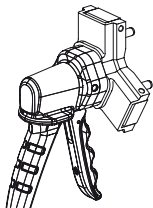
Part no. 10182829



Counter spindle D65

**HAINBUCH Spanntop nova
combi deadlength with end-stop**

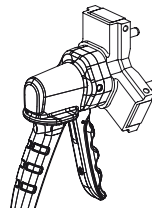
Part no. 10916697



Main spindle D65

Changing device manual

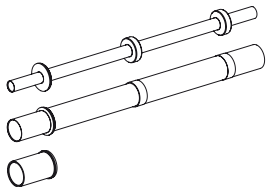
Part no. 10614886



Counter spindle D65

Changing device manual

Part no. 10614886



Spindle diameter 65mm

Clamping stroke independent

Material diameter D5 - D66

Please note the part no. from
the Spindle Reductions section
under ixshop.ixworld.com

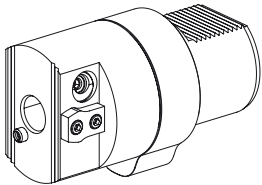
We will be happy to send you an individual offer. Simply give us a call at +49 711 3191-9854 or send us an e-mail to werkzeughalter@index-werke.de

INDEX G200.2 - Basic Equipment - Machine Accessories

In addition, INDEX also provides presetting adapters, mounting aids for damage-free installation, and gauging your tool holders and other accessories.

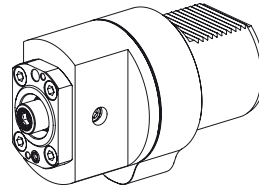
VDI25

HSK40



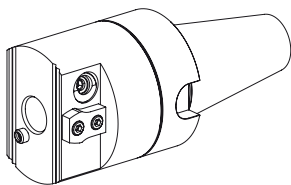
**Presetting adapter
VDI80**

Tool mounting VDI25
Part no. 10985260



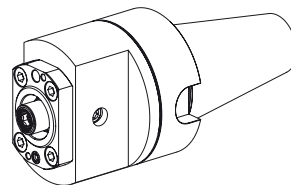
**Presetting adapter
VDI80**

Tool mounting HSK40
Part no. 10604623



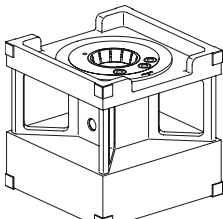
**Presetting adapter
quick-release taper 50**

Tool mounting VDI25
Part no. 10622335



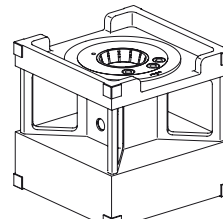
**Presetting adapter
quick-release taper 50**

Tool mounting HSK40
Part no. 10585657



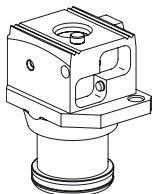
Pre-adjustment block

Basic body
Part no. 10444808



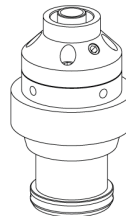
Pre-adjustment block

Basic body
Part no. 10444808



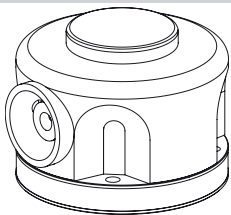
Pre-adjustment block

Adapter tool mounting VDI25
Part no. 10491250



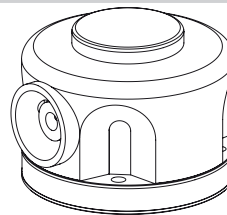
Pre-adjustment block

Adapter tool mounting HSK40
Part no. 10655070



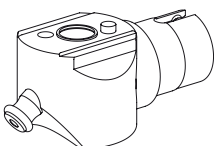
Mounting aid TOOLFIX

Base body
Part no. 10917422



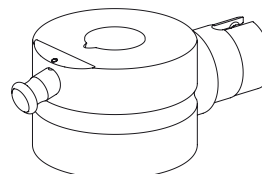
Mounting aid TOOLFIX

Base body
Part no. 10917422



Mounting aid TOOLFIX

Adapter tool mounting VDI25
Part no. 10192955

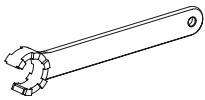


Mounting aid TOOLFIX

Adapter tool mounting HSK40
Part no. 10856198

INDEX G200.2 - Basic Equipment - Machine Accessories

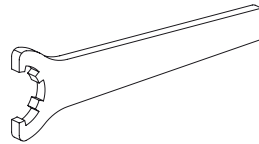
In addition, INDEX also provides presetting adapters, mounting aids for damage-free installation, and gauging your tool holders and other accessories.



Chuck Key

Type E25AX

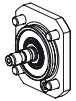
Part no. 10179444



Chuck Key

Type ER25

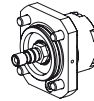
Part no. 10802433



IC-attachment

InnenCooling 80 bar

Part no. 10687215



IC-attachment

Internal cooling 160 bar

Part no. 10236572

INDEX

**INDEX-Werke GmbH & Co. KG
Hahn & Tessky**

Plochinger Straße 92
D-73730 Esslingen

Fon +49 711 3191-0
Fax +49 711 3191-587

info@index-werke.de
www.index-werke.de