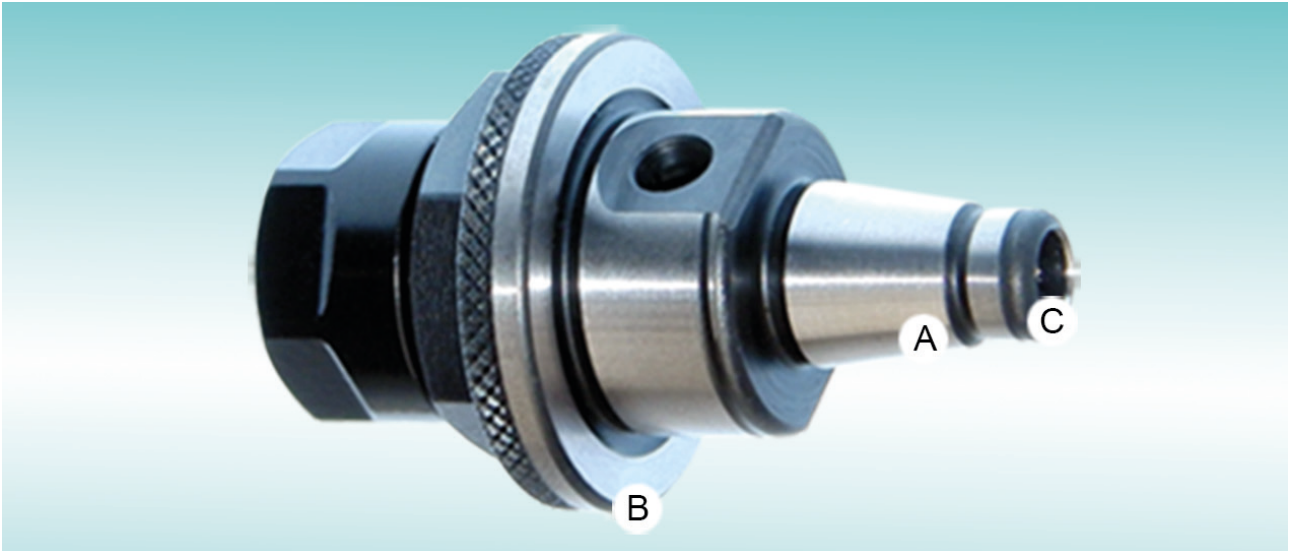




Quick-Change System WFB

Quick-Change System WFB



The Quick-Change System WFB combines the precision of a conventional tool holder with the flexibility of a modular tool holder system in an impressive way. The patented combination of a cone (A) with a front-end contact face (B) provides enormous stability and exceptionally high change accuracy. An additional support ring (C) reduces any lateral forces to a minimum.

For many years, the WFB system has impressively proved its practical suitability on our sliding headstock lathes. The insights gained from this long experience are the foundation for the development of base holders for our other machine series. This provides you now all the advantages of the quick-change system on our entire product range.

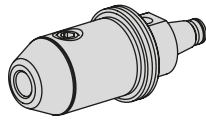
The advantages of the quick-change system WFB at a glance

- lower investment costs compared to conventional tool holders through a variety of possible combinations
- high change and concentricity accuracy over comparable systems
- reduced setup time by presetting the tools in the interchangeable inserts
- very compact design

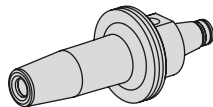
Please feel free to contact us if you have any further questions +49 711 3191-9854 or visit us online: ixshop.ixworld.com

A system with many possibilities!

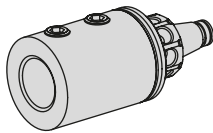
Weldon mounting



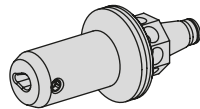
Shrink-fit mounting



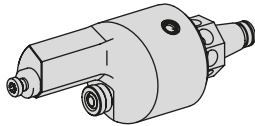
Internal tool holder



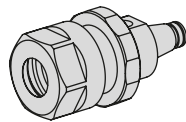
Clamping holder, Horn, S-mini



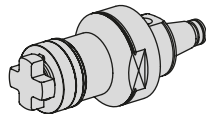
Clamping holder, Horn, Mini



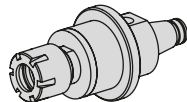
Collet mounting



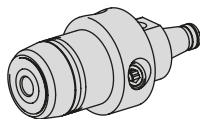
Mill arbor



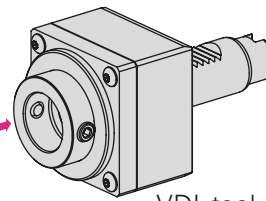
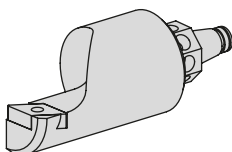
Die holder



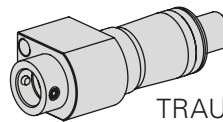
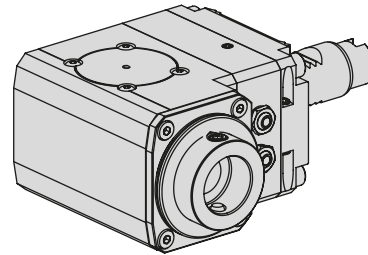
Hydraulic expansion chuck



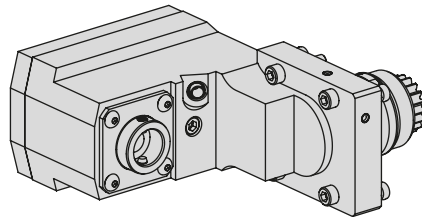
External tool holder



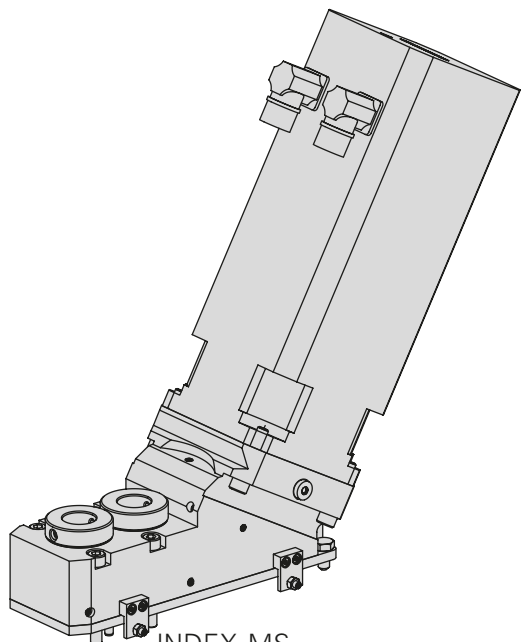
VDI tool holders



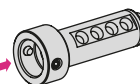
TRAUB TNL



Compact shank tool holders



INDEX MS



Adapters & extensions

INDEX

INDEX-Werke GmbH & Co. KG
Hahn & Tessky

Plochinger Straße 92
D-73730 Esslingen

Fon +49 711 3191-0
Fax +49 711 3191-587

info@index-werke.de
www.index-werke.de