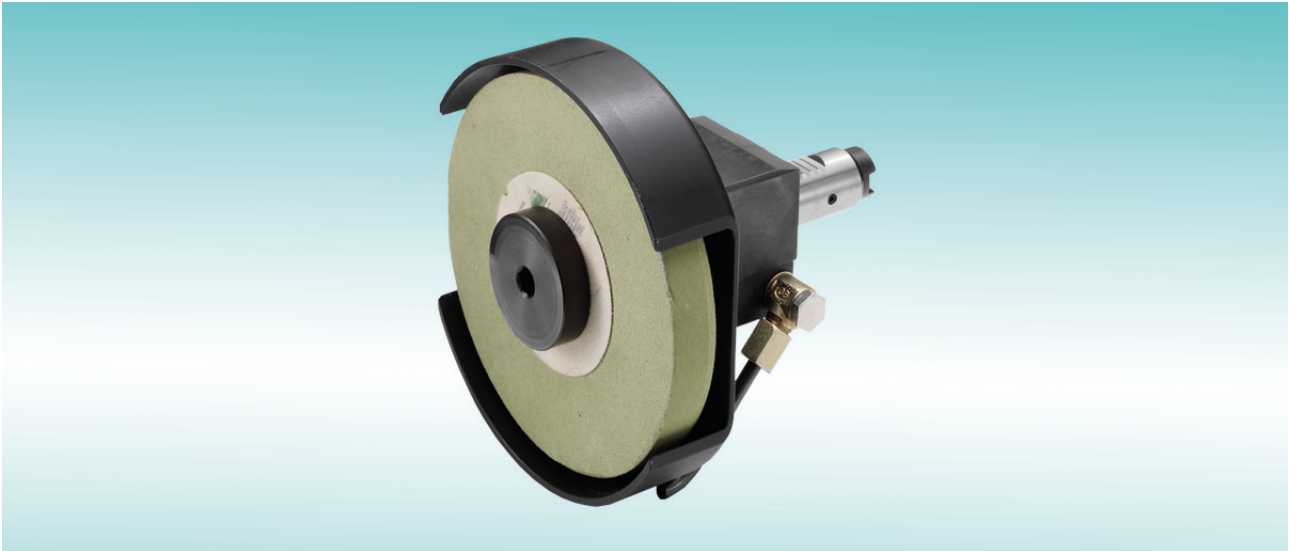


Grinding units

Grinding Units



Our grinding units supplement your lathe to a machining center, often making the use of a grinding machine superfluous.

The grinding unit can be used for flat and round machining as well as for grinding of hardened and unhardened steels. For large batches, process safety is improved by the use of calipers.

Application examples:

- **Round and out-of-round machining of shaft parts**
- **Grinding of polygons**
- **Whetting of surfaces**
- **Finish-machining of fillets (see also video)**
- **Machining the faces of undulating parts**

Please feel free to contact us if you have any further questions +49 711 3191-9854 or visit us online: ixshop.ixworld.com

INDEX

**INDEX-Werke GmbH & Co. KG
Hahn & Tessky**

Plochinger Straße 92
D-73730 Esslingen

Fon +49 711 3191-0
Fax +49 711 3191-587

info@index-werke.de
www.index-werke.de