



## **Gear Cutting Heads**

## **Gear Cutting Heads**

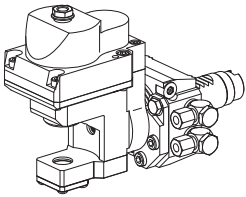


The use of our gear cutting units enables efficient complete machining of gear parts without any further production step, especially for small batches.

- **Manufacturing of straight and helical gears**
- **Gears up to module 2 and quality class IT8**
- **Position-related machining**
- **Especially efficient for small batches**
- **No B-axis required on the machine**
- **No additional investment in a gear-cutting machine**

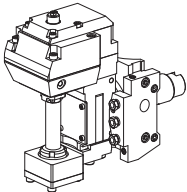
Using our gear-cutting units only requires a Y-axis and a control connection between the spindle and the live tool holder (gear box) on your lathe.

Please feel free to contact us if you have any further questions +49 711 3191-9854 or visit us online: [ixshop.ixworld.com](http://ixshop.ixworld.com)



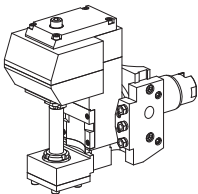
### 10877481 Gear cutting unit, angle-adjustable, VDI 25

<b>Fixation</b>	W serration
<b>Mounting</b>	–
<b>Cooling</b>	external, $p_{\max}$ 40 bar
<b>Speed ratio</b>	2:1 (2)
<b>X / Y / Z</b>	– / – / – mm (")



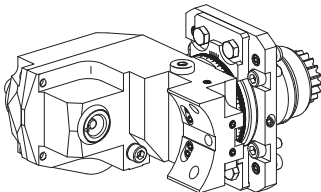
### 10083896 Gear cutting unit, angle-adjustable, $\pm 14.5^\circ$ , VDI 30

<b>Fixation</b>	TRAUB bar
<b>Mounting</b>	D16 (0.63 ")
<b>Cooling</b>	external, $p_{\max}$ 20 bar
<b>Speed ratio</b>	2:1 (2)
<b>X / Y / Z</b>	96.2 (3.79) / – / – mm (")



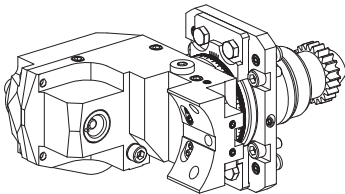
### 10086897 Gear cutting unit, VDI 40

<b>Fixation</b>	TRAUB bar
<b>Mounting</b>	Milling shaft D16 (0.63 ")
<b>Cooling</b>	external, $p_{\max}$ 20 bar
<b>Speed ratio</b>	2:1 (2)
<b>X / Y / Z</b>	103.2 (4.06) / – / – mm (")



### 10938892 Gear cutting unit, Compact shank 45

<b>Mounting</b>	–
<b>Cooling</b>	external, $p_{\max}$ 80 bar
<b>Speed ratio</b>	3:1 (3)
<b>X / Y / Z</b>	92 (3.62) / – / – mm (")



### 10339583 Gear cutting unit, Compact shank 45

<b>Mounting</b>	–
<b>Cooling</b>	external, $p_{\max}$ 80 bar
<b>Speed ratio</b>	3:1 (3)
<b>X / Y / Z</b>	92 (3.62) / – / 0 mm (")

# INDEX

**INDEX-Werke GmbH & Co. KG**  
**Hahn & Tessky**

Plochinger Straße 92  
D-73730 Esslingen

Fon +49 711 3191-0  
Fax +49 711 3191-587

[info@index-werke.de](mailto:info@index-werke.de)  
[www.index-werke.de](http://www.index-werke.de)