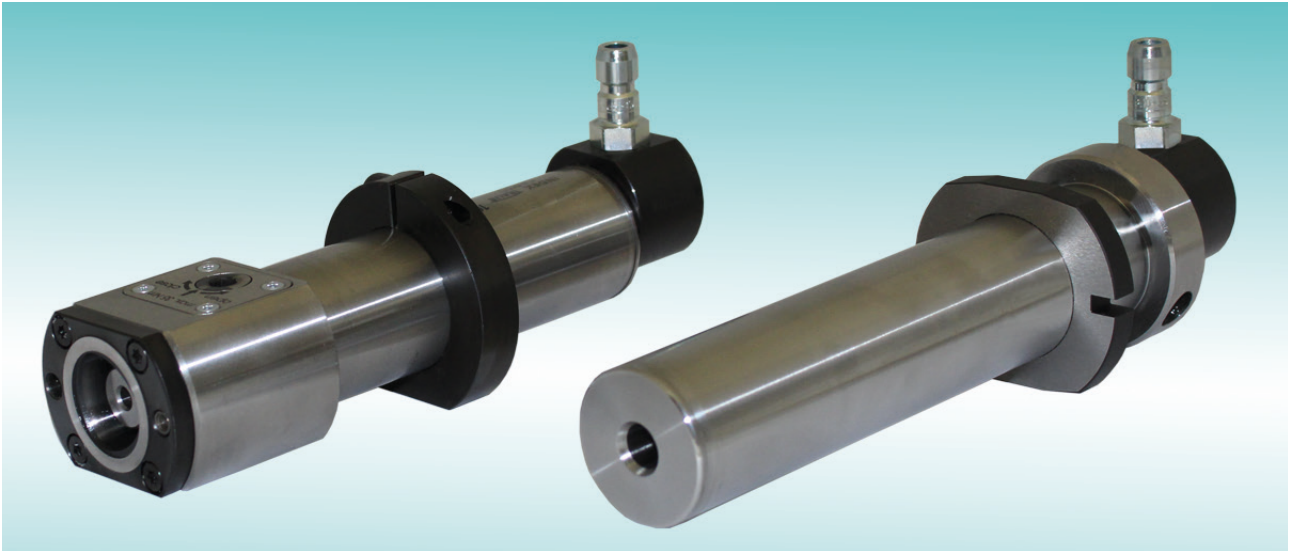




**Drill holders for multi-spindle lathes with hydraulic expansion and INDEX CAPTO mounting**

## Drill holders for multi-spindle lathes with hydraulic expansion and INDEX CAPTO mounting



The use of drill holders with hydraulic expansion clamping and INDEX CAPTO further increases the high productivity and cost-effectiveness of multi-spindle lathes.

Specific advantages of these two clamping systems:

### Hydraulic expansion clamping

- Very high change accuracy
- Excellent damping properties
- Complete clamping

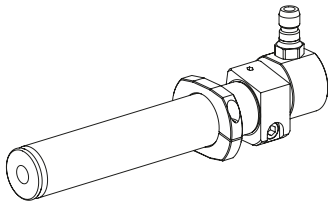
### INDEX CAPTO

- Reduction in setup time through tool presetting outside the machine
- Transmission of high torques
- High rigidity

Please feel free to contact us if you have any further questions +49 711 3191-9854 or visit us online: [ixshop.ixworld.com](http://ixshop.ixworld.com)

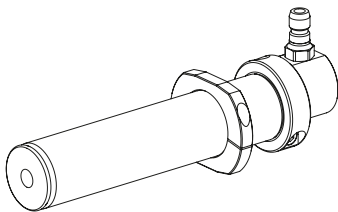
Part Number

## Drilling tool holder with Clamping ring 28.5mm



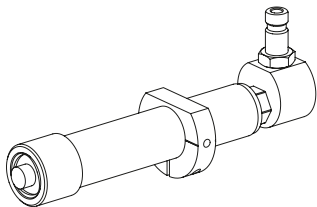
Hydraulic expansion chuck D6	12008759
Hydraulic expansion chuck D8	12034261
Hydraulic expansion chuck D10	12028308
Hydraulic expansion chuck D12	12028307
Hydraulic expansion chuck D14	12034215
Hydraulic expansion chuck D16	12028305

## Drilling tool holder with Clamping ring 36mm



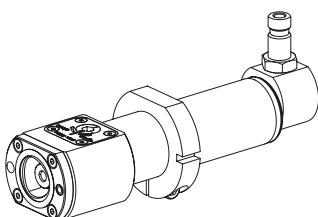
Hydraulic expansion chuck D6	12038373
Hydraulic expansion chuck D8	12038374
Hydraulic expansion chuck D10	12038375
Hydraulic expansion chuck D12	12038376
Hydraulic expansion chuck D20	12079164

## Drilling tool holder with Clamping ring 28.5mm



INDEX CAPTO C3	11092497
----------------	----------

## Drilling tool holder with Clamping ring 36mm



INDEX CAPTO C3	10748386
----------------	----------

# INDEX

## **INDEX-Werke GmbH & Co. KG Hahn & Tessky**

Plochinger Straße 92  
D-73730 Esslingen

Fon +49 711 3191-0  
Fax +49 711 3191-587

[info@index-werke.de](mailto:info@index-werke.de)  
[www.index-werke.de](http://www.index-werke.de)