



Adaptateur pour préréglage d'outils

Le réglage précis de vos outils en temps masqué



L'obtention d'un changement d'outil rapide et précis demande un pré réglage rigoureux à l'extérieur de la machine associé à un système de fixation hautement précis.

Qu'il s'agisse de dentures en W, de vés, de réglettes TRAUB, de chariots de plongée sur multibroches ou du système d'outil rigide à queue compacte 45, vous êtes sûr que vos outils mesurés hors machine avec les adaptateurs de pré réglage ajustés d'INDEX le sont avec une très grande précision.

Profiter des temps de production machine pour pré régler vos outils vous permet non seulement de réduire le temps d'immobilisation de votre machine au changement de série mais aussi de supprimer celui passé dans la machine à aligner et à tester les outils.

Nos adaptateurs de pré réglage sont disponibles en stock avec cônes ISO 50 ou interfaces VDI 80 adaptés à votre banc de pré réglage.

Nos systèmes de fixation brevetés vous garantissent le report fiable et hyper-précis de vos cotes de pré réglage dans la machine. La tenue de cote de vos pièces est ainsi assurée dès leur mise en place.

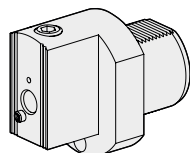
Pour plus d'informations veuillez consulter notre site: ixshop.ixworld.com

N'hésitez pas à nous contacter pour plus de détails au +49 711 3191-9854 ou par mail: werkzeughalter@index-werke.de

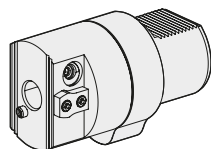
Notre sélection d'adaptateurs, queue assimilée à du VDI 80

**Interface
N° d'article**

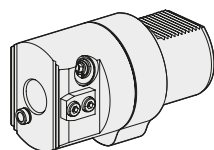
VDI 20
10110821



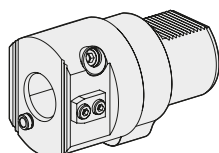
VDI 25
10985260



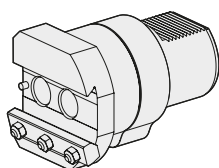
VDI 30
10864045



VDI 40
10531917

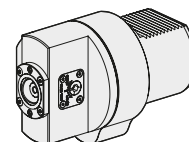


Queue d'aronde ABC
10165250

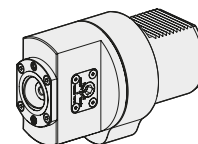


**Interface
N° d'article**

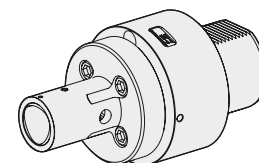
CAPTO C3
10199408



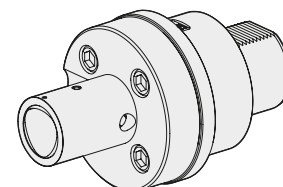
CAPTO C4
10740975



CAPTO C5
12107988



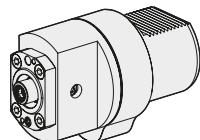
CAPTO C6
12102653



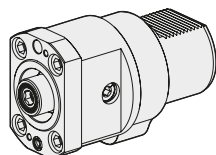
Notre sélection d'adaptateurs, queue assimilée à du VDI 80

**Interface
N° d'article**

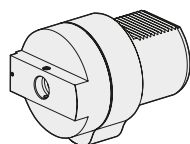
HSK 40
10604623



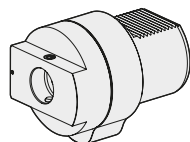
HSK 63
10094249



WFB 20-12
10948224

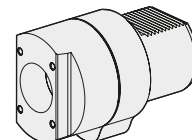


WFB 32-20
10132676

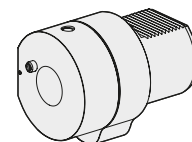


**Interface
N° d'article**

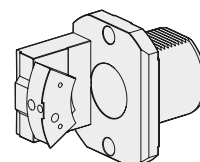
Queue compacte 45
10804918



Queue \varnothing 36mm
10460917



TNL12
Logement prisme rond
12119894

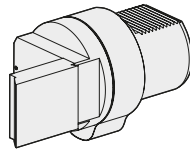


Notre sélection d'adaptateurs, queue assimilée à du VDI 80

Interface N° d'article

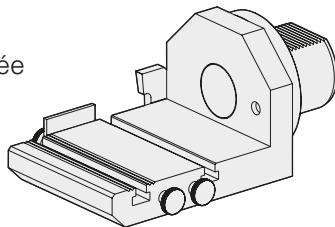
MS16/MS22
Chariot transversal

10404564



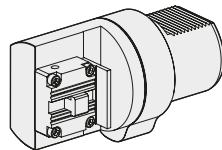
MS16
Chariot de plongée

10023878



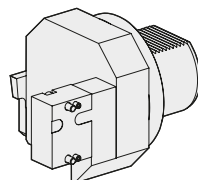
MS16
Chariot de plongée 6.0

10203762



MS16
Contreperçage
et support plongée

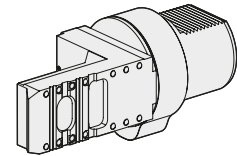
10017294



Interface N° d'article

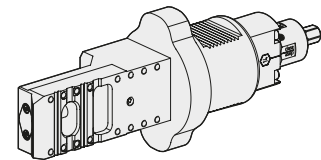
MS24
Chariot transversal

12088520



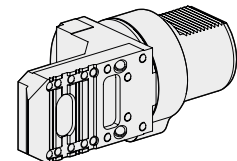
MS24
Chariot transversal
Système de serrage rapide

12103458



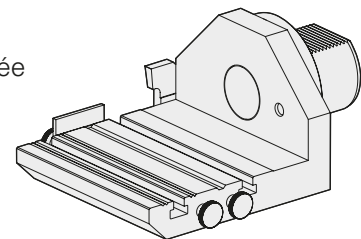
MS32C3
Chariot transversal

12045007



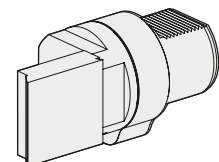
MS32C3
Chariot de plongée

12046182



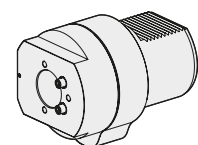
MS32/MS40
Chariot transversal

10080767



MS40P
Porte-outil de base

10272436

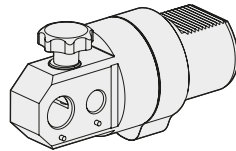


Notre sélection d'adaptateurs, queue assimilée à du VDI 80

Interface	N° d'article
-----------	--------------

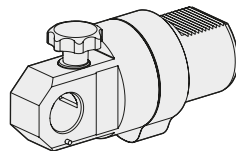
Canon ø20mm Canon ø28,5mm	
------------------------------	--

10890083	
----------	--



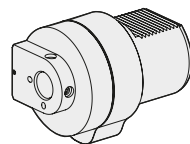
Canon ø36mm	
-------------	--

10617097	
----------	--



Élément maintien perçage ø24mm	
-----------------------------------	--

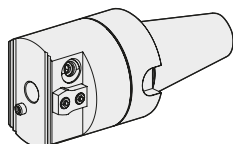
12101262	
----------	--



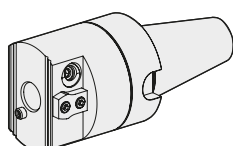
Notre sélection d'adaptateurs, queue cône ISO 50

Interface
N° d'article

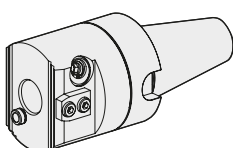
VDI 20
10697206



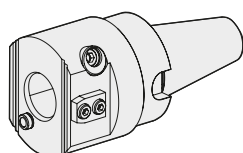
VDI 25
10622335



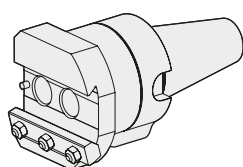
VDI 30
10740620



VDI 40
10921942

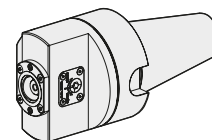


Queue d'aronde ABC
10408691

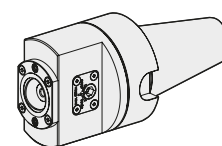


Interface
N° d'article

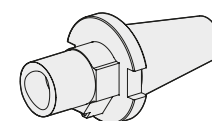
CAPTO C3
10804854



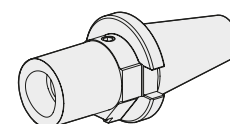
CAPTO C4
10577772



CAPTO C5
12107987



CAPTO C6
12095573

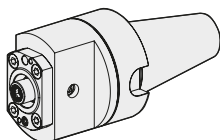


Notre sélection d'adaptateurs, queue cône ISO 50

**Interface
N° d'article**

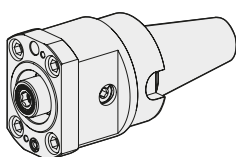
HSK 40

10585657



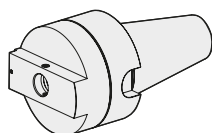
HSK 63

10614276



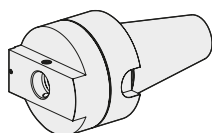
WFB 20-12

10492699



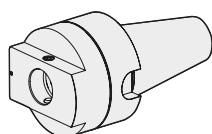
WFB 24-16

12014903



WFB 32-20

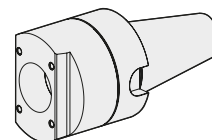
10210178



**Interface
N° d'article**

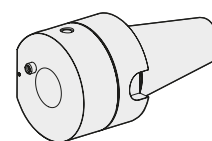
Queue compacte 45

10213668



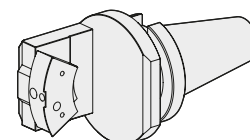
Queue \varnothing 36mm

10101818



TNL12
Logement prisme rond

12060715

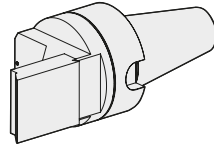


Notre sélection d'adaptateurs, queue cône ISO 50

Interface N° d'article

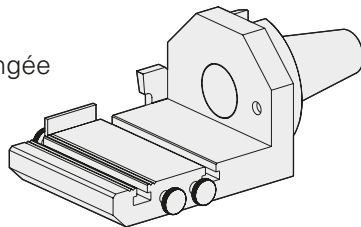
MS16/MS22
Chariot transversal

10848553



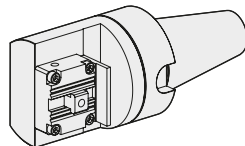
MS16
Chariot de plongée

10903447



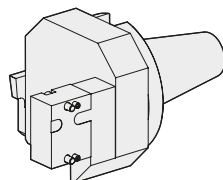
MS16
Chariot de plongée 6.0

12078093



MS16
Contreperçage
et support plongée

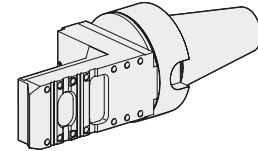
10248147



Interface N° d'article

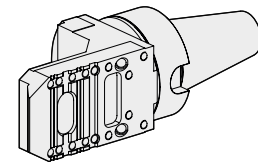
MS24
Chariot transversal

12088519



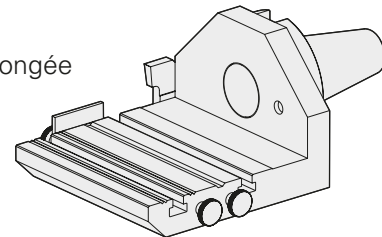
MS32C3
Chariot transversal

12045006



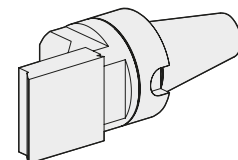
MS32C3
Chariot de plongée

12046183



MS32/MS40
Chariot transversal

10731417

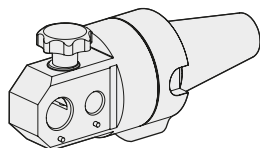


Notre sélection d'adaptateurs, queue cône ISO 50

Interface
N° d'article

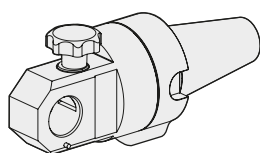
Canon ø20mm
Canon ø28,5mm

11067101



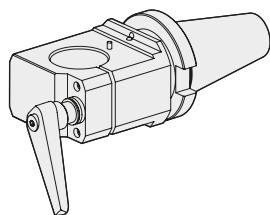
Canon ø36mm

10834401



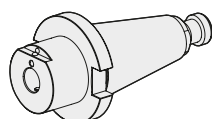
Canon ø51mm

12110626



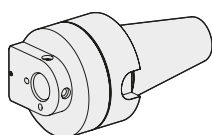
Élément maintien
perçage ø22mm

10563167



Élément maintien
perçage ø24mm

12036679



INDEX

INDEX-Werke GmbH & Co. KG Hahn & Tessky

Plochinger Straße 92
D-73730 Esslingen

Fon +49 711 3191-0
Fax +49 711 3191-587

info@index-werke.de
www.index-werke.de