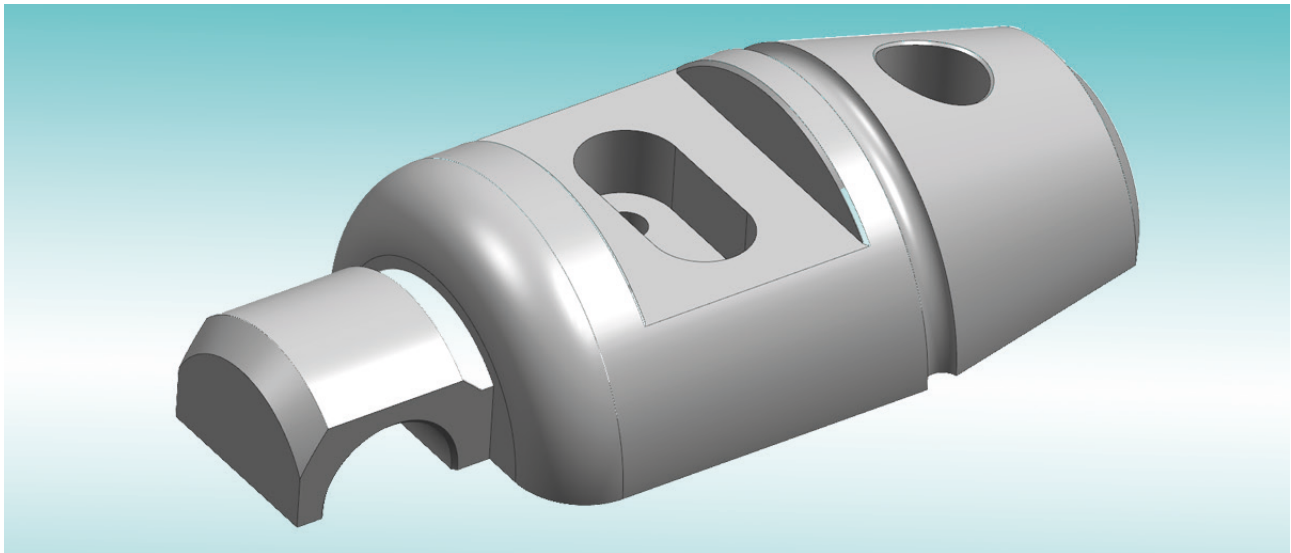


**3D-STEP-Import
as an option to WinFlexIPS / WinFlexIPS^{Plus}**

3D-STEP-Import as an option to WinFlexIPS / WinFlexIPS^{Plus}

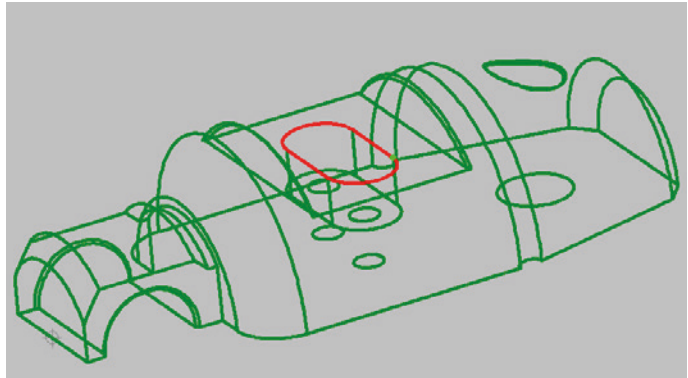


Your benefits at a glance:

- Direct transfer of contours from 3D Step data to the geometry processor of WinFlexIPS / WinFlexIPS^{Plus}
- Paperless programming of the workpiece
- Easy and quick alignment of the position of the 3D model to the next rectangular plane
- Hiding of non-relevant areas for uncluttered view
- Zero point is set by snapping and clicking on a desired existing point
- Direct reading of the coordinates of all existing points
- Automatically generated contour of contiguous geometrical elements
- After the projection, the contour can be edited in the geometry processor using the existing tools of WinFlexIPS / WinFlexIPS^{Plus}
- Flexible use of the contours for workpieces, blanks, cutting tool edge shapes, etc.

If you have further questions, don't hesitate to call us at +49 711 3191-548
or send us an e-mail to info@index-werke.de

With the “3D STEP Import” interactive function for WinFlexIPS / WinFlexIPS^{Plus}, 3D files can be loaded directly in Step format (.stp, .step) and opened. The loaded object is displayed as a grid model.



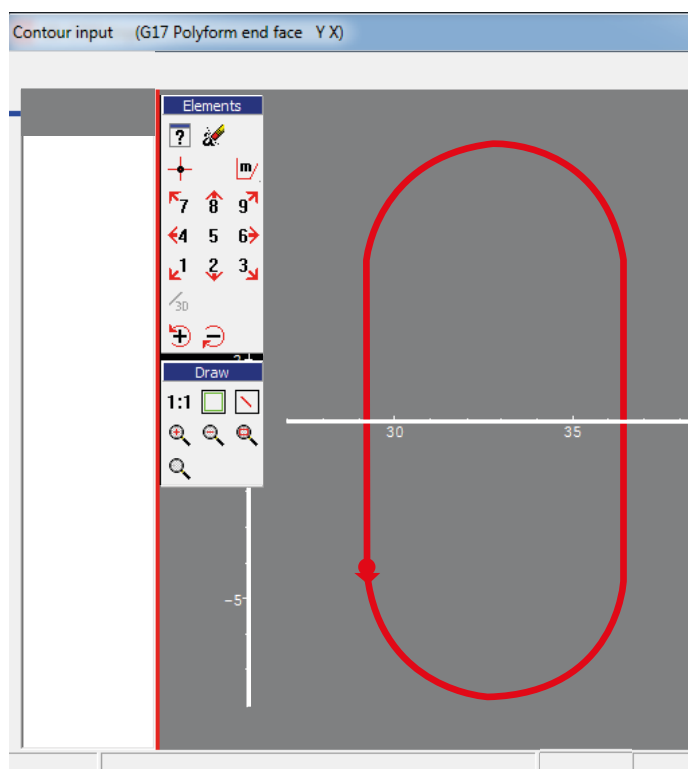
The individual geometry elements can then be selected and projected into the geometry editor as 2D contours. The position before the projection is essential. The function connects contiguous geometry elements to a contour. If elements are selected that have no connection, several contours will be displayed in the geometry processor after the projection. These “2D contours” can be saved in the geometry processor and reloaded during editing operations.

Another feature is interception or projecting of coordinates (points). They can be used for operations such as drilling patterns for further editing.

For positioning the 3D model for projection, there are functions that allow quick alignment to the next straight angular position of the model. It is also possible to execute rotations in the X/Y/Z axes by a manually entered angle or to rotate or shift the model with the cursor in the 3D space.

The subsequent zero point is set by clicking and snapping on a desired existing point. For better visibility, entire sections can be hidden by marking a rectangular frame with the cursor.

There is also the possibility with this module to generate contours for blanks or cutting insert or holder shapes.





**INDEX-Werke GmbH & Co. KG
Hahn & Tessky**

Plochinger Straße 92
D-73730 Esslingen

Fon +49 711 3191-0
Fax +49 711 3191-587

info@index-werke.de
www.index-werke.de