

# Product note

## **WFB interface**

Mounting, cleaning and care, tightening torques

## **Note on applicability**

Illustrations in this publication may deviate from the product supplied. Errors and omissions due to technical progress expected.

## **A word on copyright**

This document is protected by copyright and was originally compiled in German.  
The duplication and distribution of this document or parts thereof is prohibited without prior consent of the copyright owner, and any violators will be prosecuted. All rights, including the right to translate, are reserved.

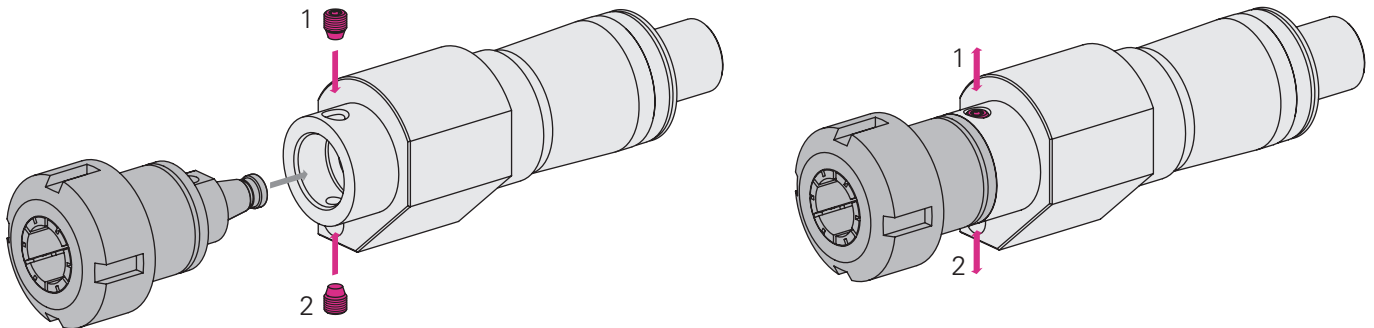
© Copyright by INDEX-Werke GmbH & Co. KG

## WFB interface

Mounting, cleaning and care, tightening torques

### Mounting

- Tighten threaded taper pin (1) by loosening and retightening it 1 or 2 times. This results in optimum positioning of the components.
- Now also tighten the threaded taper pin (2) (in the same way as above).
- For the torques, please see the table below.



### Cleaning and Care

- The surfaces of the faces, taper bore and tapers must be cleaned and covered with an oil lubricating film.
- To achieve optimum fastening results and easy release of the threaded taper pins, it is recommended to treat the threaded taper pins with a hot screw paste, e.g. Molykote 1000 or High-Tech Ceramic Compound by Wera

### Tightening torques

Tightening torques		
Size	Threaded Taper Pin	Tightening Torque
WFB 20-12	M6x1	4 Nm
WFB 24-16	M8x1	10 Nm
WFB 32-20	M10x1	20 Nm
WFB 40-25	M12x1	25 Nm
WFB 50-32	M14x1	30 Nm

Tightening torques When Using Mandrel Gauges		
Size	Threaded Taper Pin	Tightening Torque
WFB 20-12	M6x1	5 Nm
WFB 24-16	M8x1	5 Nm
WFB 32-20	M10x1	10 Nm
WFB 40-25	M12x1	10 Nm
WFB 50-32	M14x1	15 Nm



**INDEX-Werke GmbH & Co. KG  
Hahn & Tessky**

Plochinger Straße 92  
D-73730 Esslingen

Fon +49 711 3191-0  
Fax +49 711 3191-587

[info@index-werke.de](mailto:info@index-werke.de)  
[www.index-werke.de](http://www.index-werke.de)