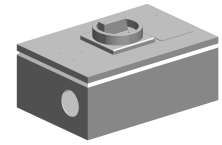

Main switch

Technical data

Electrical assemblies	Power/main switch
Length	300 Millimeter
Width	200 Millimeter
Height	120 Millimeter
Cross-section	50 Square millimeter
Number of wires/poles (ST)	3 Piece
Current	125 Ampere
Voltage	400 Volt
Protection class	IP65



No 3-side view is currently available for this product

10799097
486300.0681

INDEX

Documents

No downloads available for this product