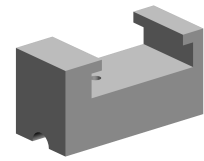


## Bar guide 10mm

### Technical data

<b>INDEX TRAUB products</b>	TNL18
<b>Function (Component)</b>	Bar guide
<b>Spindle clearance</b>	21mm
<b>Bar loading magazine</b>	FMB minimag 20
<b>Machining side</b>	Main spindle
<b>Spindle drive</b>	Direct drive • Belt drive
<b>Material diameter</b>	8mm (0.31") • 9mm (0.35")



No 3-side view is currently available for this product

10552459  
781018

**INDEX**

---

## **Documents**

No downloads available for this product