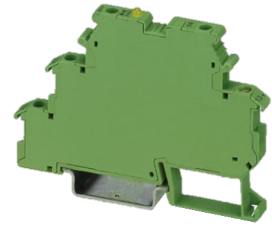

OPTO MODULE DC/DC 3A #2941374

Technical data

Electrical assemblies	Relay
Length	80 Millimeter
Width	6.2 Millimeter
Height	56 Millimeter
Current	3 Ampere
Voltage	24 Volt
Voltage type	DC=
Switching function	(1) NO contact



No 3-side view is currently available for this product

10369941
487454.0151

INDEX

Documents

No downloads available for this product