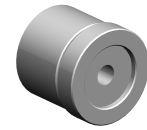


## Unscrewing device, 42 mm, 60 mm

### Technical data

<b>INDEX TRAUB products</b>	ABC • ABC.2
<b>Function (Component)</b>	Unscrewing device
<b>Spindle clearance</b>	60mm • 42mm
<b>Bar loading magazine</b>	INDEX LMI
<b>Clamping stroke</b>	7mm (0.28") • 20mm (0.79")
<b>Machining side</b>	Main spindle
<b>Material diameter</b>	5mm (0.20") • 6mm (0.24") • 7mm (0.28") • 8mm (0.31") • 9mm (0.35") • 10mm (0.39") • 11mm (0.43") • 12mm (0.47") • 13mm (0.51") • 14mm (0.55") • 15mm (0.59") • 16mm (0.63") • 17mm (0.67") • 18mm (0.71") • 19mm (0.75") • 20mm (0.79") • 21mm (0.83") • 22mm (0.87") • 23mm (0.91") • 24mm (0.94") • 25mm (0.98") • 26mm (1.02") • 27mm (1.06") • 28mm (1.1") • 29mm (1.14") • 30mm (1.18") • 31mm (1.22") • 32mm (1.26") • 33mm (1.30") • 34mm (1.34") • 35mm (1.38") • 36mm (1.42") • 37mm (1.46") • 38mm (1.50") • 39mm (1.54") • 40mm (1.57") • 41mm (1.61") • 42mm (1.65") • 43mm (1.69") • 44mm (1.73") • 45mm (1.77") • 46mm (1.81") • 47mm (1.85") • 48mm (1.89") • 49mm (1.93") • 50mm (1.97") • 51mm (2.01") • 52mm (2.05") • 53mm (2.09")



No 3-side view is currently available for this product

## **Documents**

No downloads available for this product