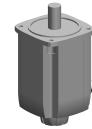


## AC-Motor 20,0Nm 2000 600V

### Technical data

|                                   |                        |
|-----------------------------------|------------------------|
| <b>manufacturer product line</b>  | Siemens                |
| <b>Electrical assemblies</b>      | Servomotor             |
| <b>manufacturer product line</b>  | 1FT7                   |
| <b>Length</b>                     | 242.5 Millimeter       |
| <b>Width</b>                      | 155 Millimeter         |
| <b>Height</b>                     | 196.5 Millimeter       |
| <b>Number of wires/poles (ST)</b> | 10 Piece               |
| <b>Current</b>                    | 9 Ampere               |
| <b>Voltage</b>                    | 600 Volt               |
| <b>Voltage type</b>               | AC~                    |
| <b>(Nominal) speed (rpm)</b>      | 2000 1/minute          |
| <b>Rated power W</b>              | 3500 Watt              |
| <b>(Stall) torque [Nm]</b>        | 20 Newton/meter        |
| <b>Communication</b>              | DirveCliq              |
| <b>Plug connection/type</b>       | M23 (size 1 / encoder) |
| <b>Protection class</b>           | IP65                   |
| <b>Encoder type</b>               | absolute - single-turn |
| <b>Brake</b>                      | no – unbraked          |
| <b>Motor design</b>               | IM B5                  |



No 3-side view is currently available for this product

## **Documents**

No downloads available for this product