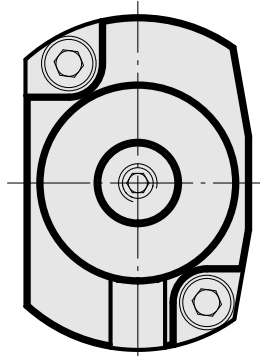
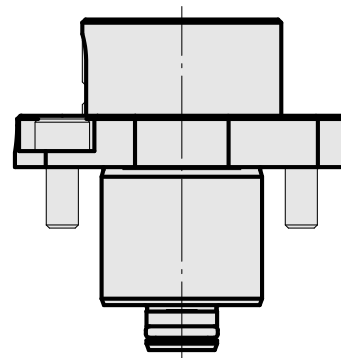
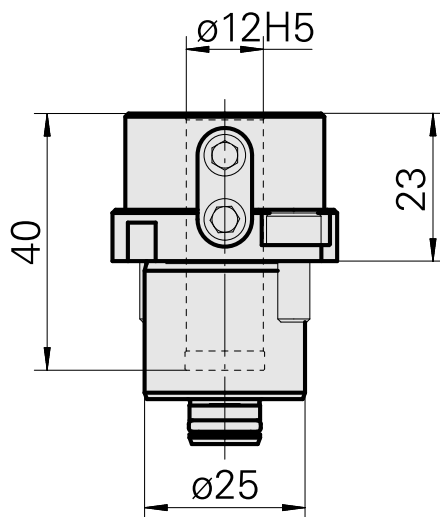


## Mount Shank 25 D12 (0.47 ")

### Technical data

|                             |   |
|-----------------------------|---|
| <b>Shank KPS</b>            | Shank 25  |
| <b>Drive</b>                | not live  |
| <b>Cooling</b>              | internal  |
| <b>Mounting</b>             | D12   |
| <b>Pressure</b>             | 80 bar, internal 120 bar opt.   |
| <b>X [mm]</b>               | -   |
| <b>Y [mm]</b>               | -   |
| <b>Z [mm]</b>               | 23 (0,91")  |
| <b>INDEX TRAUB products</b> | TNL20 • TNL32-11 compact<br>• TNL20-11 • TNL32 compact<br>• TNK40.2-10 • TNK40.2-8 •<br>TNL20.2 |



## **Documents**

No downloads available for this product

## **Accessories**

Optional accessories

**Other accessories**

[Mounting sleeve with collar D12](#)

Product ID : 11060576

Previous product ID : W94280.21--

---