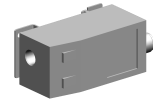


Pressure switch

Technical data

Electrical assemblies	Pressure sensor
Length	87 Millimeter
Width	32.3 Millimeter
Height	35.2 Millimeter
Voltage	24 Volt
Voltage type	DC=
Pressure [bar]	10 bar
Plug connection/type	M12
Protection class	IP65



No 3-side view is currently available for this product

10778931
486510.0281

INDEX

Documents

No downloads available for this product