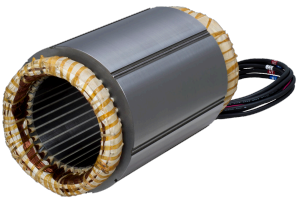


Motor

Technical features

Electrical assemblies	Motor accessories
Current	7.5 Ampere
Voltage	400 Volt
Voltage type	AC (alternating current)
(Nominal) speed (rpm)	5000 1/minute
Rated power	3000 Watt
(Stall) torque	5.73 Newton/meter
Brake	no – unbraked



No 3-side view is currently available for this product

---

**Documents**

No downloads available for this product