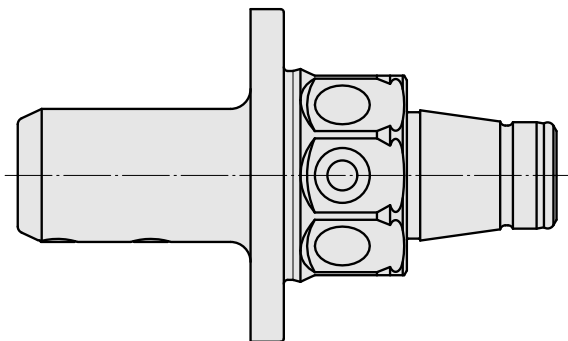
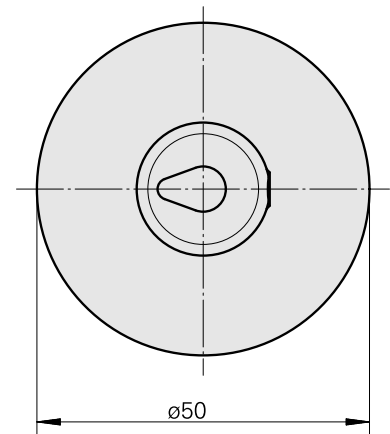
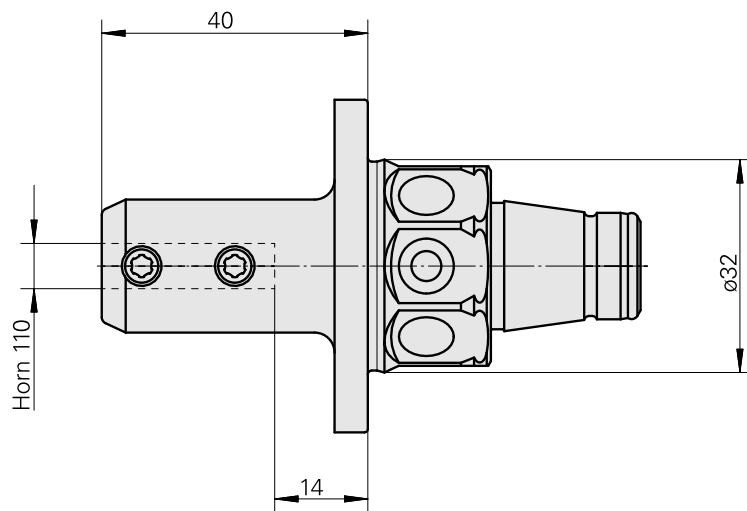
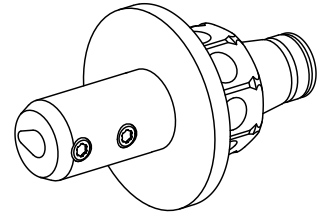


## WFB 32-20 Horn Type 110

### Caratteristiche tecniche

|                                       |               |
|---------------------------------------|---------------|
| <b>Categoria acces. portautensile</b> | WFB 32-20     |
| <b>Attacco</b>                        | Horn Type 110 |
| <b>Accessorio per cambio rapido</b>   | Horn S-Mini   |



## **Documenti**

Non sono disponibili download per questo prodotto