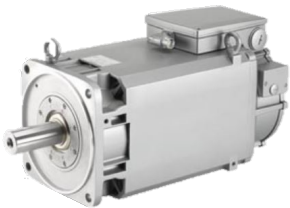


Motor

Technical features

Ext. manufacturer product line	Siemens
Electrical assemblies	AC motor
Ext. manufacturer product line	1PH
Voltage type	AC (alternating current)
(Nominal) speed (rpm)	1000 1/minute
Rated power	12000 Watt
Protection class	IP55
Brake	no – unbraked
Motor design	IM B5



No 3-side view is currently available for this product

Documents

No downloads available for this product