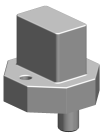


Proximity pick up

Technical data

|                       |                     |
|-----------------------|---------------------|
| Electrical assemblies | Proximity sensor    |
| Length (mm)           | 35 Millimeter       |
| Voltage               | 24 Volt             |
| Voltage type          | DC (direct current) |
| Plug connection/type  | M8                  |
| Protection class      | IP67                |



No 3-side view is currently available for this product

---

**Documents**

No downloads available for this product