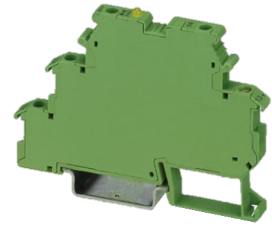

OPTO MODULE DC/DC 3A #2941374

Technical data

| | |
|------------------------------|----------------|
| Electrical assemblies | Relay |
| Length | 80 Millimeter |
| Width | 6.2 Millimeter |
| Height | 56 Millimeter |
| Current | 3 Ampere |
| Voltage | 24 Volt |
| Voltage type | DC= |
| Switching function | (1) NO contact |



No 3-side view is currently available for this product

Documents

No downloads available for this product