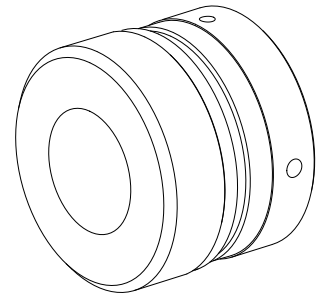


Unscrewing device, 60 mm, 65 mm

Technical features

INDEX TRAUB products	ABC • C200 • G200 • G220 • ABC.2
Function (Component)	Unscrewing device
Spindle clearance	60 mm • 65 mm
Bar loading magazine	INDEX MBL • INDEX MBF
Clamping stroke	7 mm (0.28 ") • 20 mm (0.79 ")
Machining side	Main spindle
Machine number range	6-digit machine number • 8-digit machine number
Material diameter	32 mm (1.26 ") • 33 mm (1.30 ") • 34 mm (1.34 ") • 35 mm (1.38 ") • 36 mm (1.42 ") • 37 mm (1.46 ") • 38 mm (1.50 ") • 39 mm (1.54 ") • 40 mm (1.57 ") • 41 mm (1.61 ") • 42 mm (1.65 ") • 43 mm (1.69 ") • 44 mm (1.73 ") • 45 mm (1.77 ") • 46 mm (1.81 ") • 47 mm (1.85 ") • 48 mm (1.89 ") • 49 mm (1.93 ") • 50 mm (1.97 ") • 51 mm (2.01 ") • 52 mm (2.05 ") • 53 mm (2.09 ") • 54 mm (2.13 ") • 55 mm (2.17 ") • 56 mm (2.20 ") • 57 mm (2.24 ") • 58 mm (2.28 ") • 59 mm (2.32 ") • 60 mm (2.36 ") • 61 mm (2.40 ") • 62 mm (2.44 ") • 63 mm (2.48 ") • 64 mm (2.52 ") • 65 mm (2.56 ") • 66 mm (2.60 ")



No 3-side view is currently available for this product

Documents

No downloads available for this product