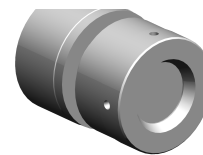


## Unscrewing device

### Technical features



#### INDEX TRAUB products

ABC • ABC65 • B400 • C100 • C200  
• G200.2 • G220 • TNK42/65 •  
TNX65/42 • TNA400.2 • ABC.2 •  
G220.3 • TNX200.3 • TNX220.3 •  
G200.3

#### Function (Component)

Unscrewing device

#### Bar loading magazine

INDEX MBL (2. Generation) 3200 •  
INDEX MBL (2. Generation) 4200 •  
MBL76 3200 • INDEX MBL76 4200

#### Material diameter

10 mm (0.39 ") • 11 mm (0.43 ") •  
12 mm (0.47 ") • 13 mm (0.51 ") •  
14 mm (0.55 ") • 15 mm (0.59 ") •  
16 mm (0.63 ") • 17 mm (0.67 ") •  
18 mm (0.71 ") • 19 mm (0.75 ") •  
20 mm (0.79 ") • 21 mm (0.83 ") •  
22 mm (0.87 ") • 23 mm (0.91 ") •  
24 mm (0.94 ") • 25 mm (0.98 ")

No 3-side view is currently available for this product

## **Documents**

No downloads available for this product