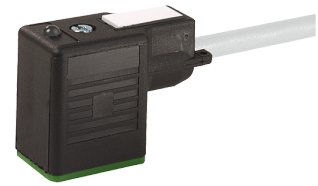


## Cable

### Technical data

<b>Electrical assemblies</b>	Electr. assembly lines
<b>Length</b>	10000 Millimeter
<b>Cross-section</b>	0.75 Square millimeter
<b>Number of wires/poles (ST)</b>	3 Piece
<b>Current</b>	4 Ampere
<b>Voltage</b>	24 Volt
<b>Voltage type</b>	AC~ • DC=
<b>Plug connection/type</b>	Cube shape BI
<b>Outer diameter (mm)</b>	5.9 Millimeter
	GY - grey
<b>Protection class</b>	IP67
<b>Shield</b>	no - unshielded
<b>Insulating material</b>	PUR



No 3-side view is currently available for this product

10117644  
222909

**INDEX**

---

## **Documents**

No downloads available for this product