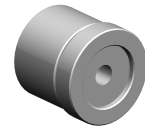


Unscrewing device, 42 mm, 60 mm

Technical features

INDEX TRAUB products	ABC • ABC.2
Function (Component)	Unscrewing device
Spindle clearance	60 mm • 42 mm
Bar loading magazine	INDEX LMI
Clamping stroke	7 mm (0.28 ") • 20 mm (0.79 ")
Machining side	Main spindle
Material diameter	5 mm (0.20 ") • 6 mm (0.24 ") • 7 mm (0.28 ") • 8 mm (0.31 ") • 9 mm (0.35 ") • 10 mm (0.39 ") • 11 mm (0.43 ") • 12 mm (0.47 ") • 13 mm (0.51 ") • 14 mm (0.55 ") • 15 mm (0.59 ") • 16 mm (0.63 ") • 17 mm (0.67 ") • 18 mm (0.71 ") • 19 mm (0.75 ") • 20 mm (0.79 ") • 21 mm (0.83 ") • 22 mm (0.87 ") • 23 mm (0.91 ") • 24 mm (0.94 ") • 25 mm (0.98 ") • 26 mm (1.02 ") • 27 mm (1.06 ") • 28 mm (1.1 ") • 29 mm (1.14 ") • 30 mm (1.18 ") • 31 mm (1.22 ") • 32 mm (1.26 ") • 33 mm (1.30 ") • 34 mm (1.34 ") • 35 mm (1.38 ") • 36 mm (1.42 ") • 37 mm (1.46 ") • 38 mm (1.50 ") • 39 mm (1.54 ") • 40 mm (1.57 ") • 41 mm (1.61 ") • 42 mm (1.65 ") • 43 mm (1.69 ") • 44 mm (1.73 ") • 45 mm (1.77 ") • 46 mm (1.81 ") • 47 mm (1.85 ") • 48 mm (1.89 ") • 49 mm (1.93 ") • 50 mm (1.97 ") • 51 mm (2.01 ") • 52 mm (2.05 ") • 53 mm (2.09 ")



No 3-side view is currently available for this product

Documents

No downloads available for this product