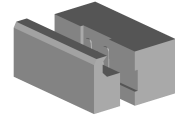

FESTO SMT0-1-PS-S-LED-24C

Technical data

| | |
|----------------------------------|------------------|
| Electrical assemblies | Proximity sensor |
| Length | 44 Millimeter |
| Voltage | 24 Volt |
| Voltage type | DC= |
| Plug connection/type | M8 |
| Protection class | IP67 |
| Switching function | (1) NO contact |
| Measuring range max. (mm) | 4 Millimeter |



No 3-side view is currently available for this product

10393016
478762.8151

INDEX

Documents

No downloads available for this product