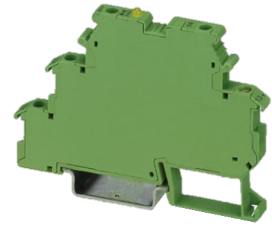


---

## **OPTO MODULE DC/DC 3A #2941374**

### **Technical data**

|                              |                |
|------------------------------|----------------|
| <b>Electrical assemblies</b> | Relay          |
| <b>Length</b>                | 80 Millimeter  |
| <b>Width</b>                 | 6.2 Millimeter |
| <b>Height</b>                | 56 Millimeter  |
| <b>Current</b>               | 3 Ampere       |
| <b>Voltage</b>               | 24 Volt        |
| <b>Voltage type</b>          | DC=            |
| <b>Switching function</b>    | (1) NO contact |



No 3-side view is currently available for this product

## **Documents**

No downloads available for this product