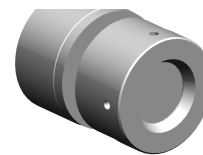


Unscrewing device

Technical data



INDEX TRAUB products

ABC • ABC65 • B400 • C100 • C200
• G200.2 • G220 • TNK42/65 •
TNX65/42 • TNA400.2 • ABC.2 •
G220.3 • TNX200.3 • TNX220.3 •
G200.3 • B400.3 • TNA400.3

Function (Component)

Unscrewing device

Bar loading magazine

INDEX MBL (2. Generation) 3200 •
INDEX MBL (2. Generation) 4200 •
MBL76 3200 • INDEX MBL76 4200

Material diameter

10mm (0.39") • 11mm (0.43") •
12mm (0.47") • 13mm (0.51") •
14mm (0.55") • 15mm (0.59") •
16mm (0.63") • 17mm (0.67") •
18mm (0.71") • 19mm (0.75") •
20mm (0.79") • 21mm (0.83") •
22mm (0.87") • 23mm (0.91") •
24mm (0.94") • 25mm (0.98")

No 3-side view is currently available for this product

Documents

No downloads available for this product